



Matthews Hall

[Complex Outline](#)

[Basement - Floor 0](#)

[1st Floor](#)

[2nd Floor](#)

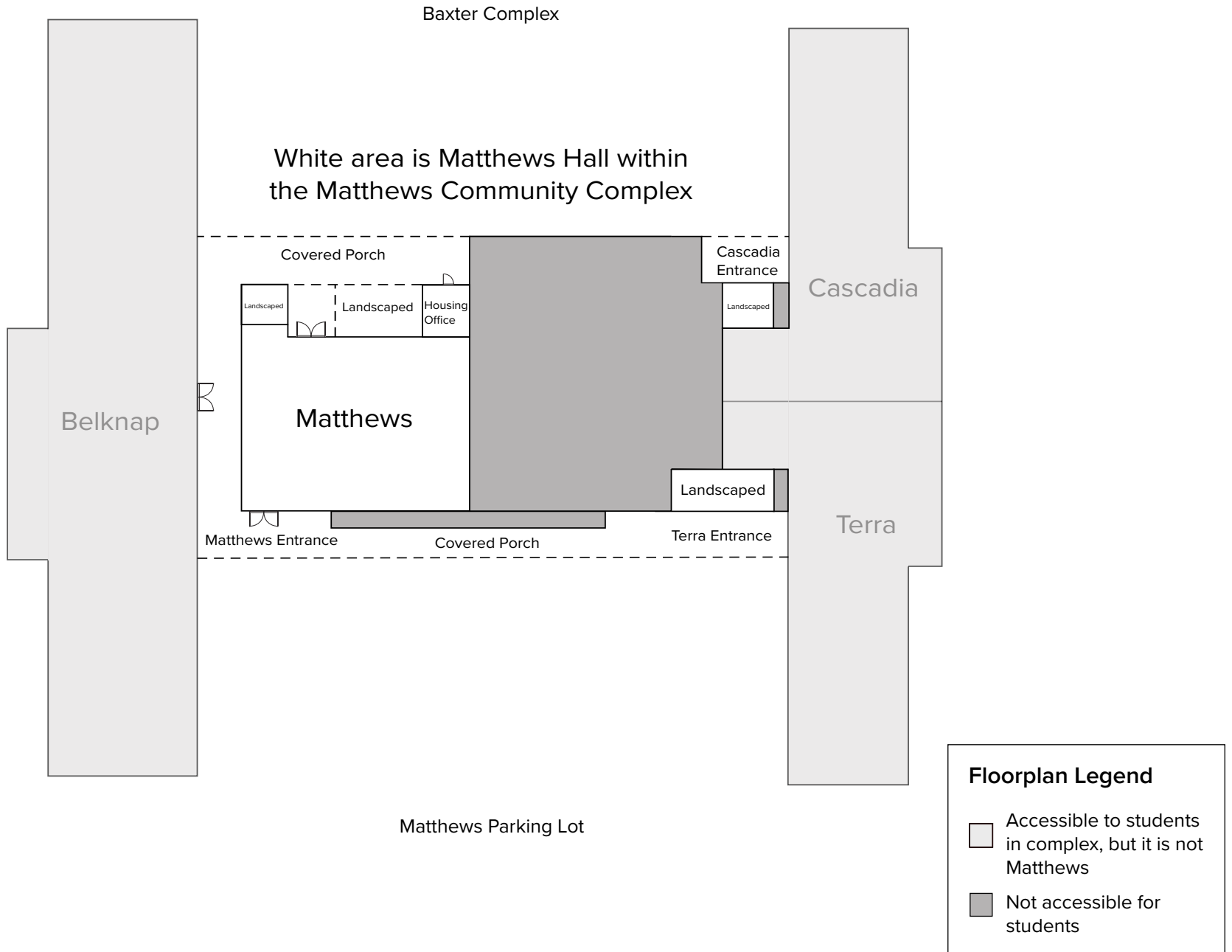
[3rd Floor](#)

Please contact the Office of Residence Life and Housing via email (housing@willamette.edu) for more assistance.

If you feel you have a need to contact Accessible Education Services to discuss the ADA accommodation process, please contact them at accessible-info@willamette.edu prior to seeking an assigned housing space as the AES is an involved process that requires documentation.

Matthews Complex - Matthews Hall Outline

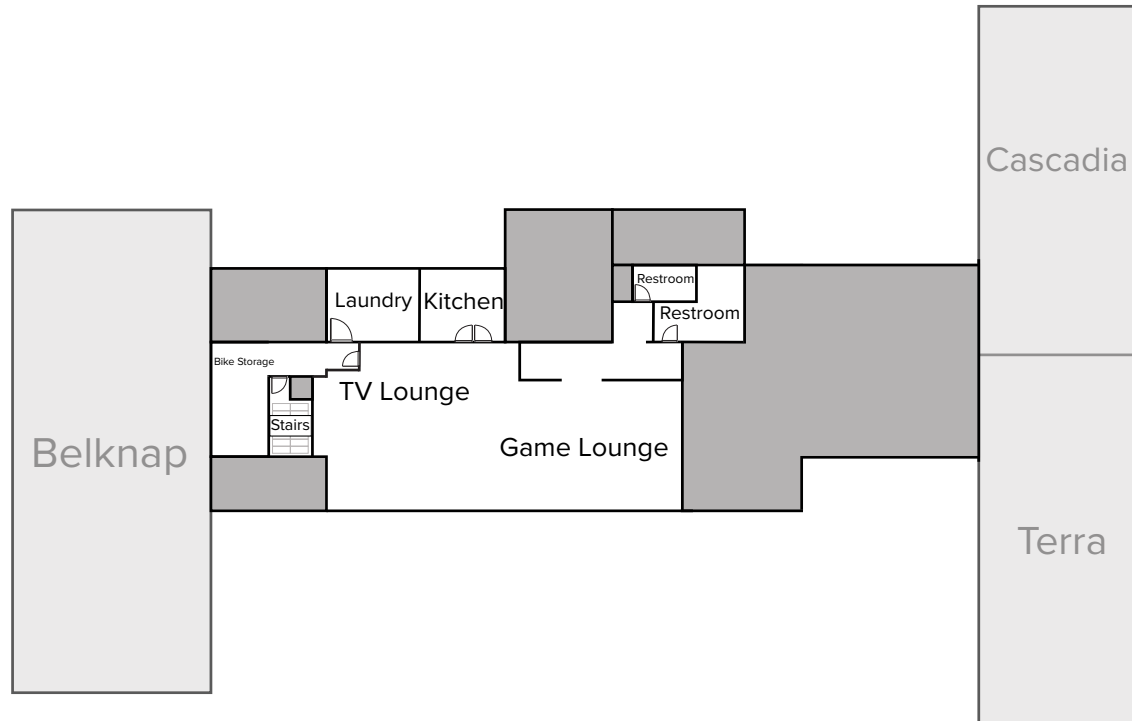
*Not drawn to scale



Matthews Hall - Basement



*Not drawn to scale

Baxter Complex



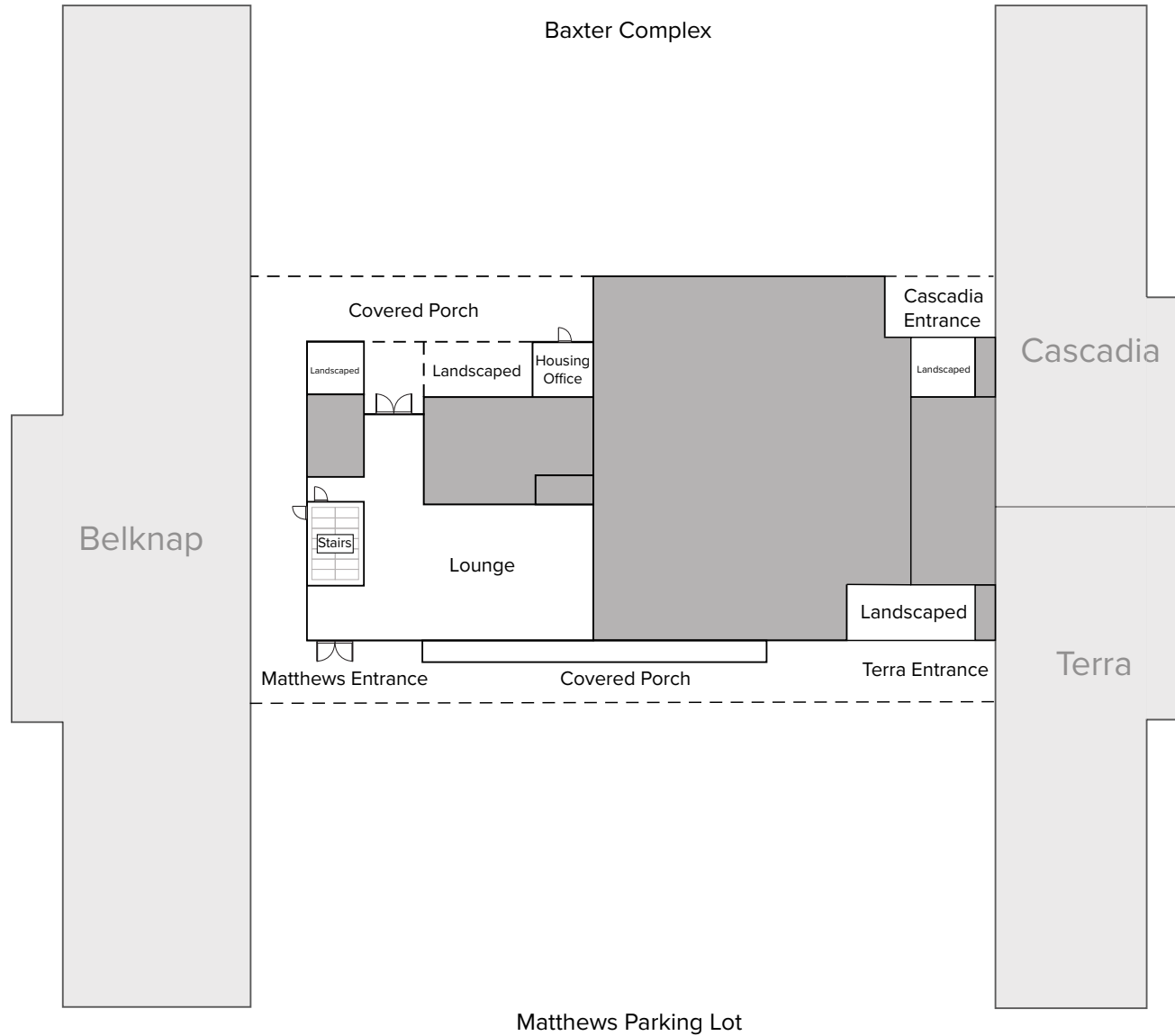
Matthews Parking Lot

Floorplan Legend

-  Accessible to students in complex, but it is not Matthews
-  Not accessible for students

Matthews Hall - Floor 1

*Not drawn to scale

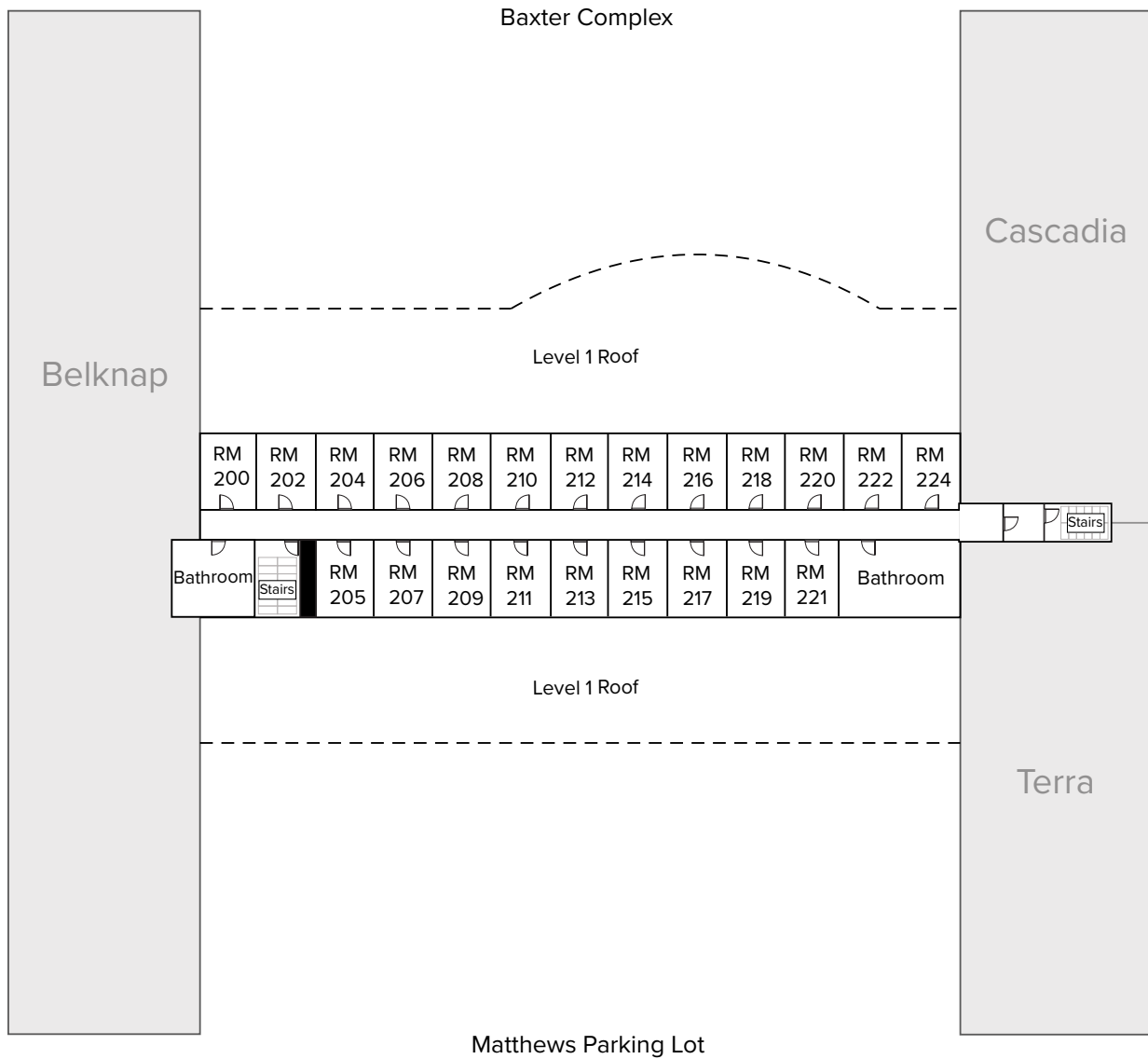


Floorplan Legend



- Accessible to students in complex, but it is not Matthews
- Not accessible for students

Matthews Hall - Floor 2

*Not drawn to scale

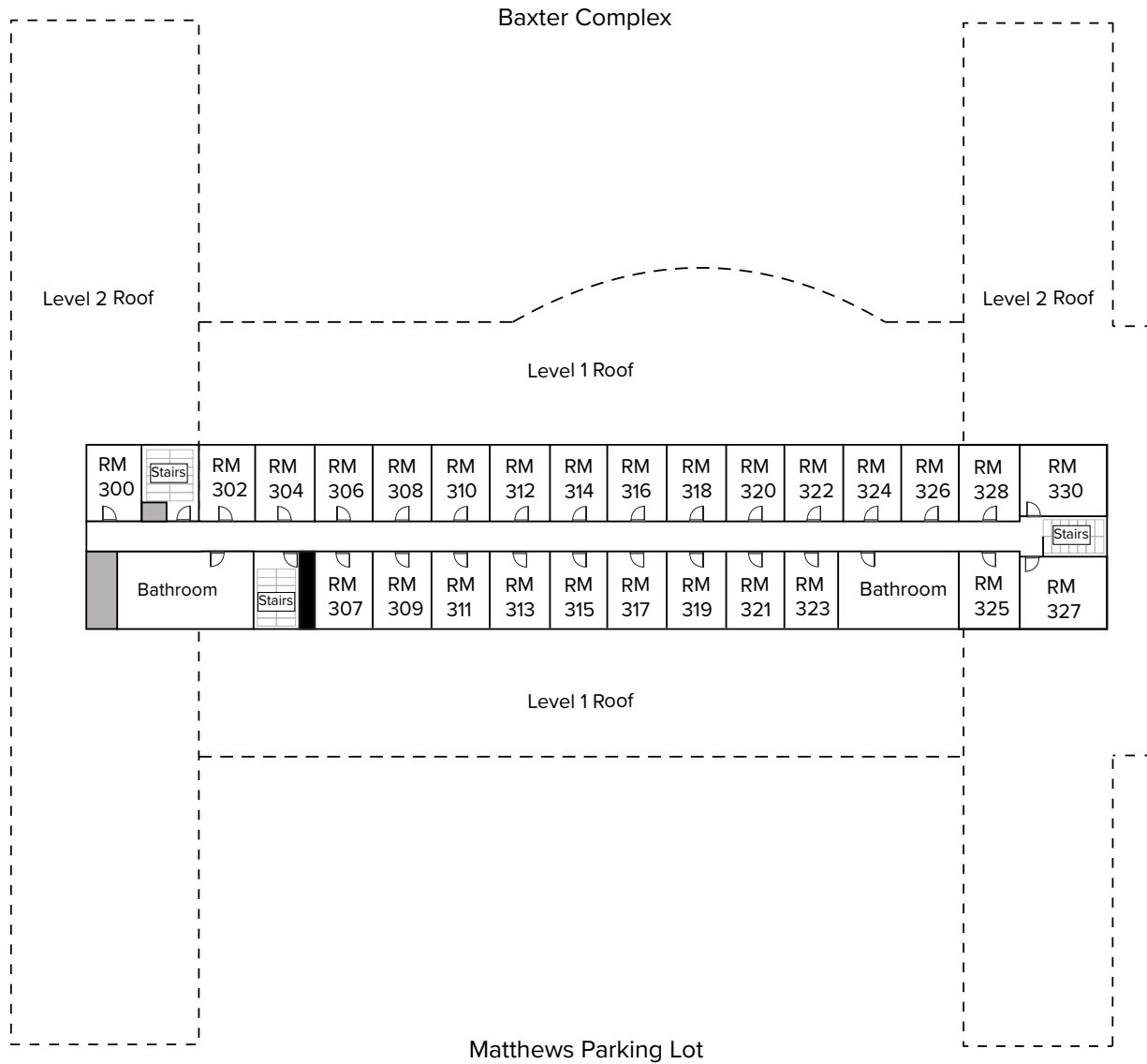


Floorplan Legend

-  Accessible to students in complex, but it is not Matthews
-  Utility Space (Not accessible to students)

Matthews Hall - Floor 3

*Not drawn to scale



Floorplan Legend

- Utility Space (Not accessible to students)
- Not accessible for students