



Doney Hall

[Garden Level - Floor 0](#)

[1st Floor](#)

[2nd Floor](#)

[3rd Floor](#)

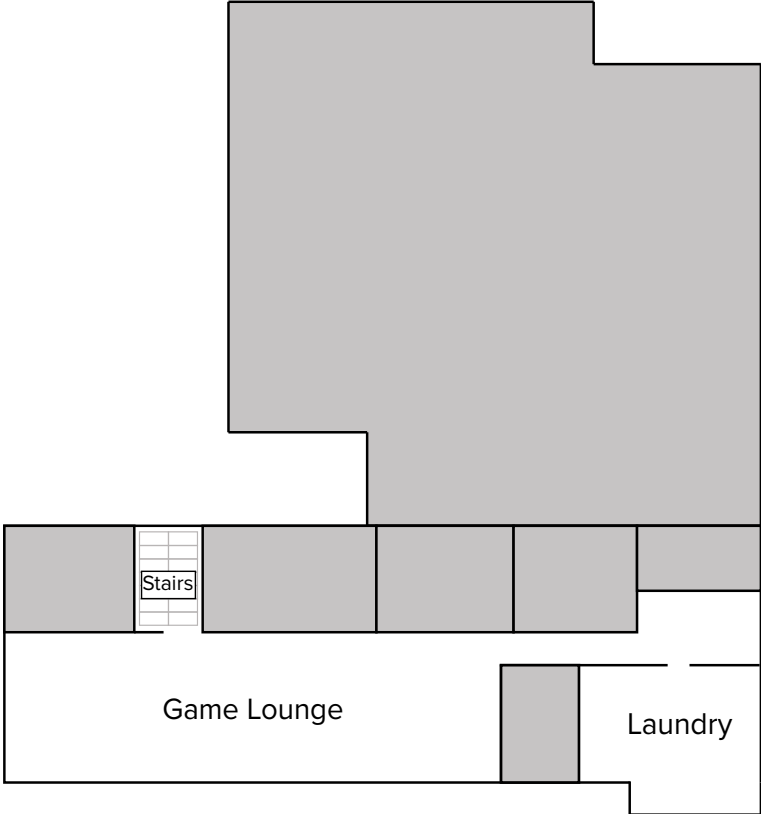
Please contact the Office of Residence Life and Housing via email (housing@willamette.edu) for more assistance.

If you feel you have a need to contact Accessible Education Services to discuss the ADA accommodation process, please contact them at accessible-info@willamette.edu prior to seeking an assigned housing space as the AES is an involved process that requires documentation.

Doney Hall - Garden Level

*Not drawn to scale

Winter Street



Quad

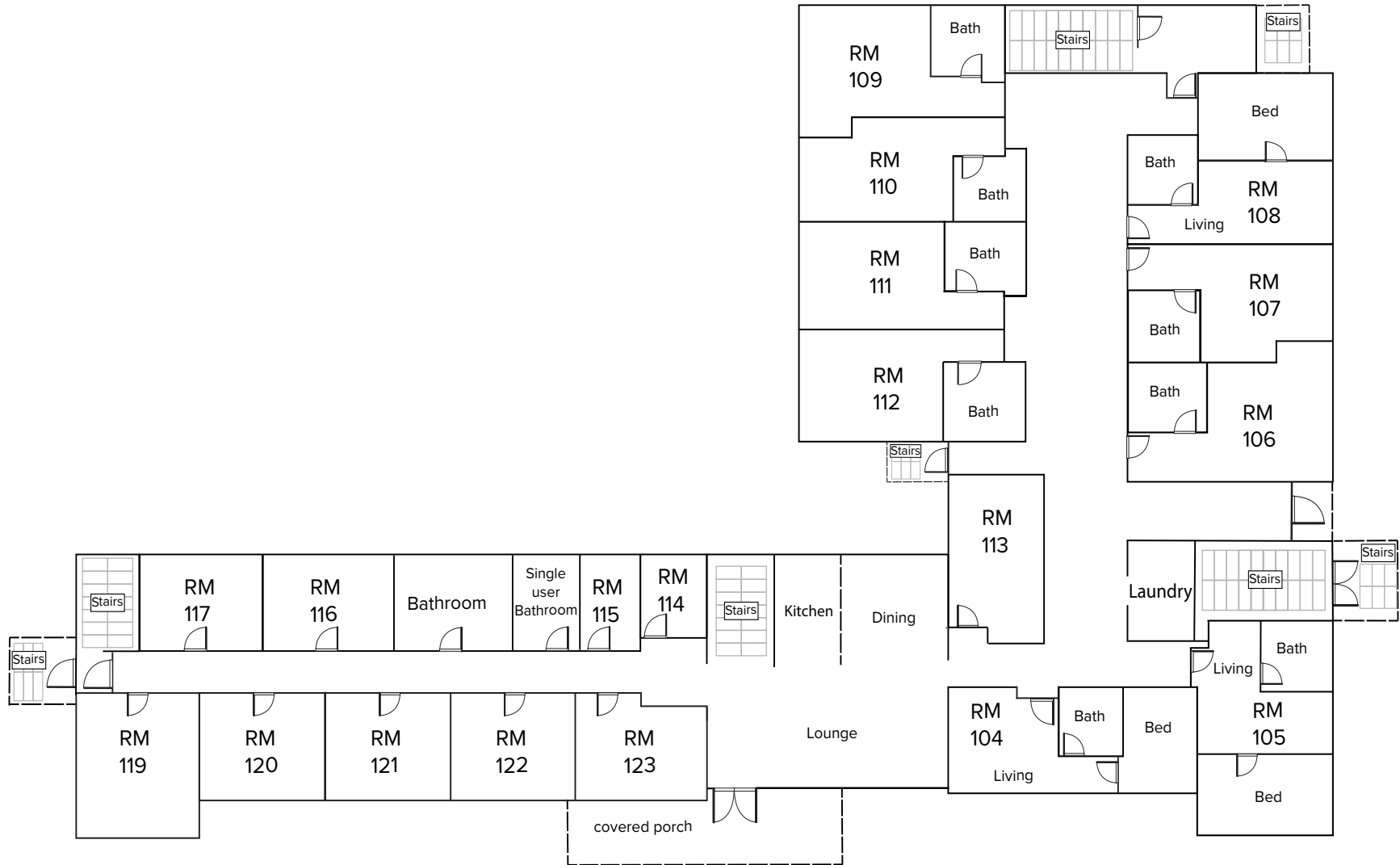
Floorplan Legend

- Not accessible for students

Doney Hall - Floor 1

*Not drawn to scale

Winter Street



Quad

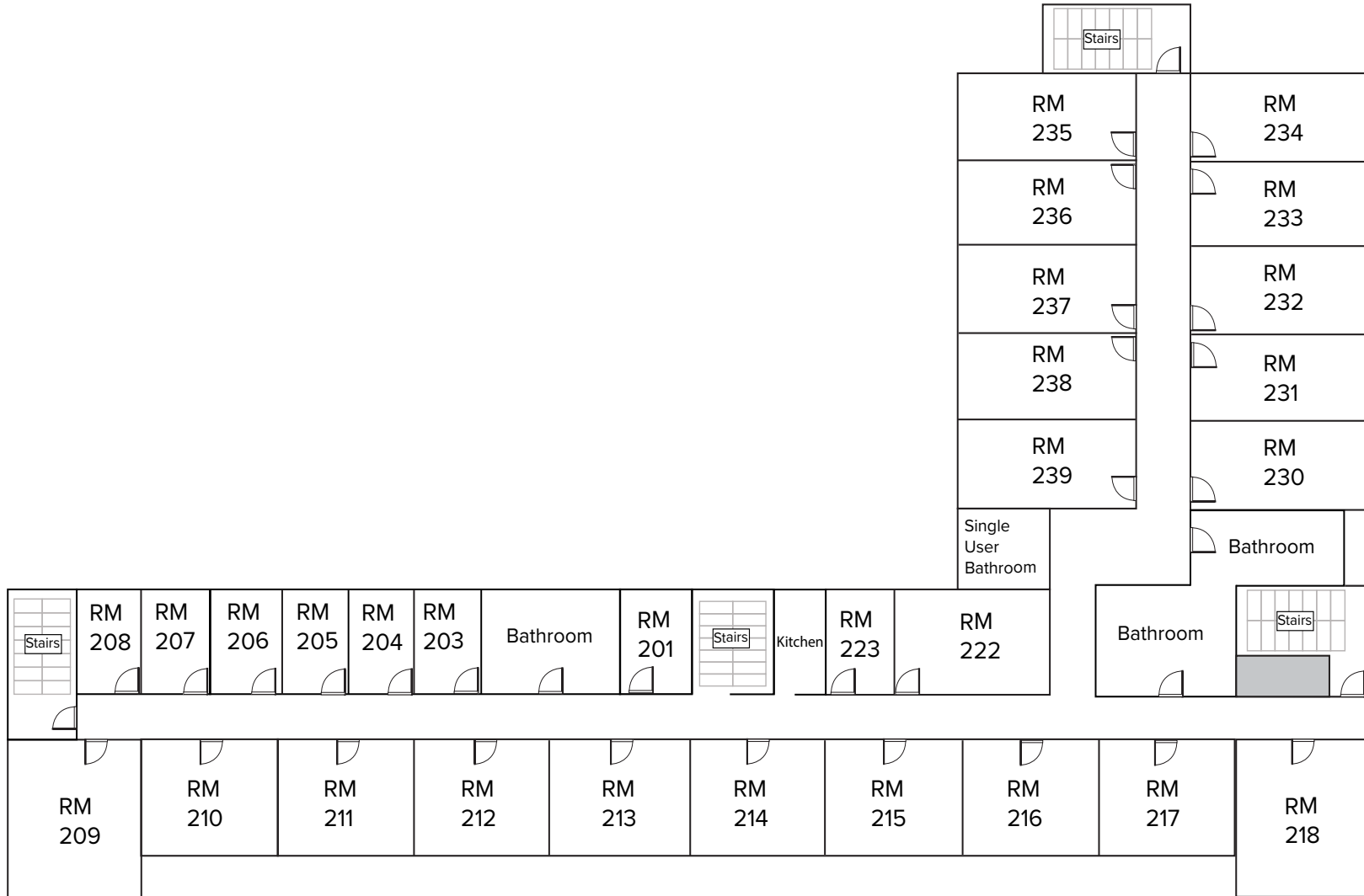
Floorplan Legend

----- No real wall, separate room

Doney Hall - Floor 2

*Not drawn to scale

Winter Street



Quad

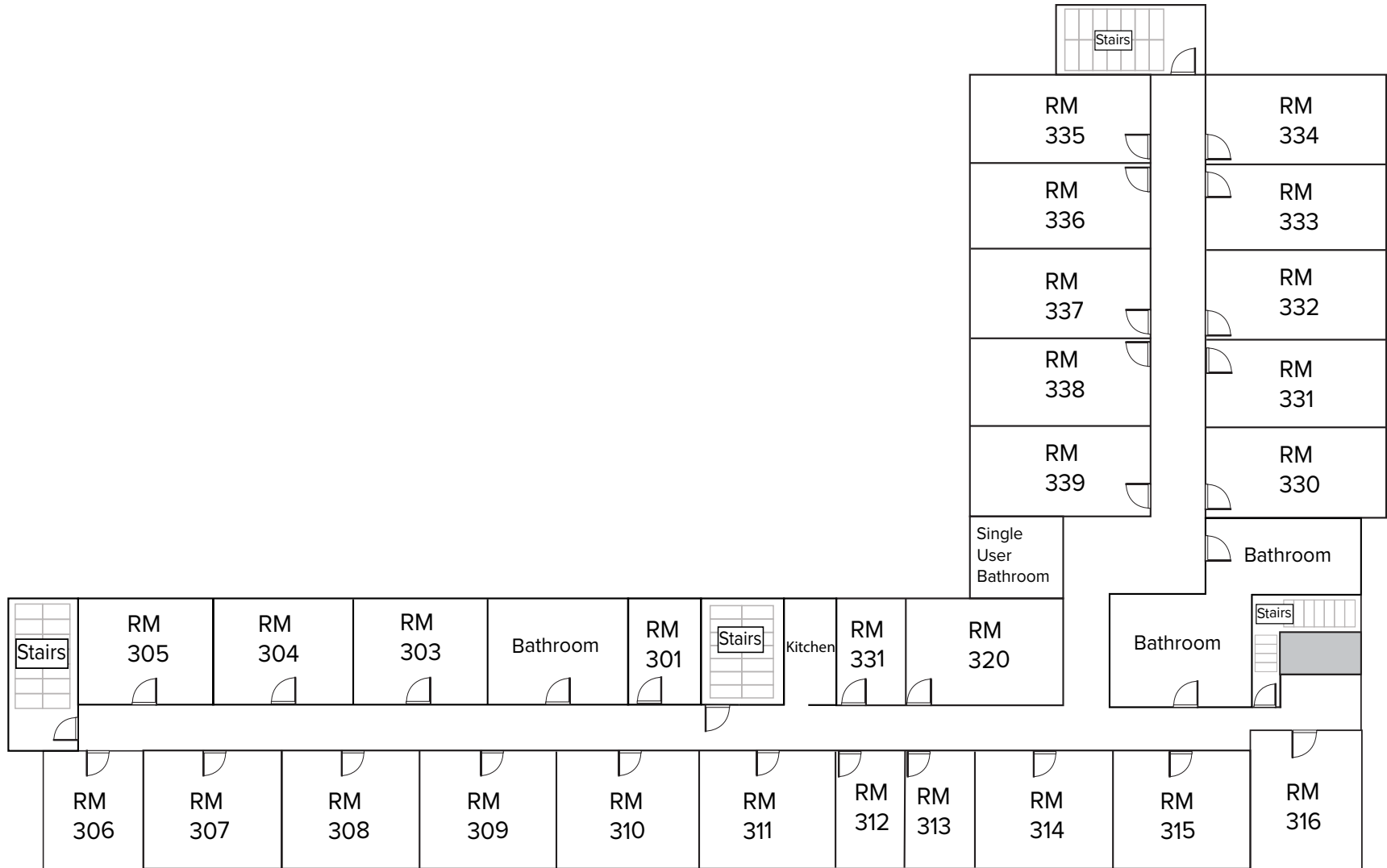
Floorplan Legend

- Not accessible for students

Doney Hall - Floor 3

*Not drawn to scale

Winter Street



Quad

Floorplan Legend

- Not accessible for students