



# Westwood Hall

---

[Basement - Floor 0](#)

[1st Floor](#)

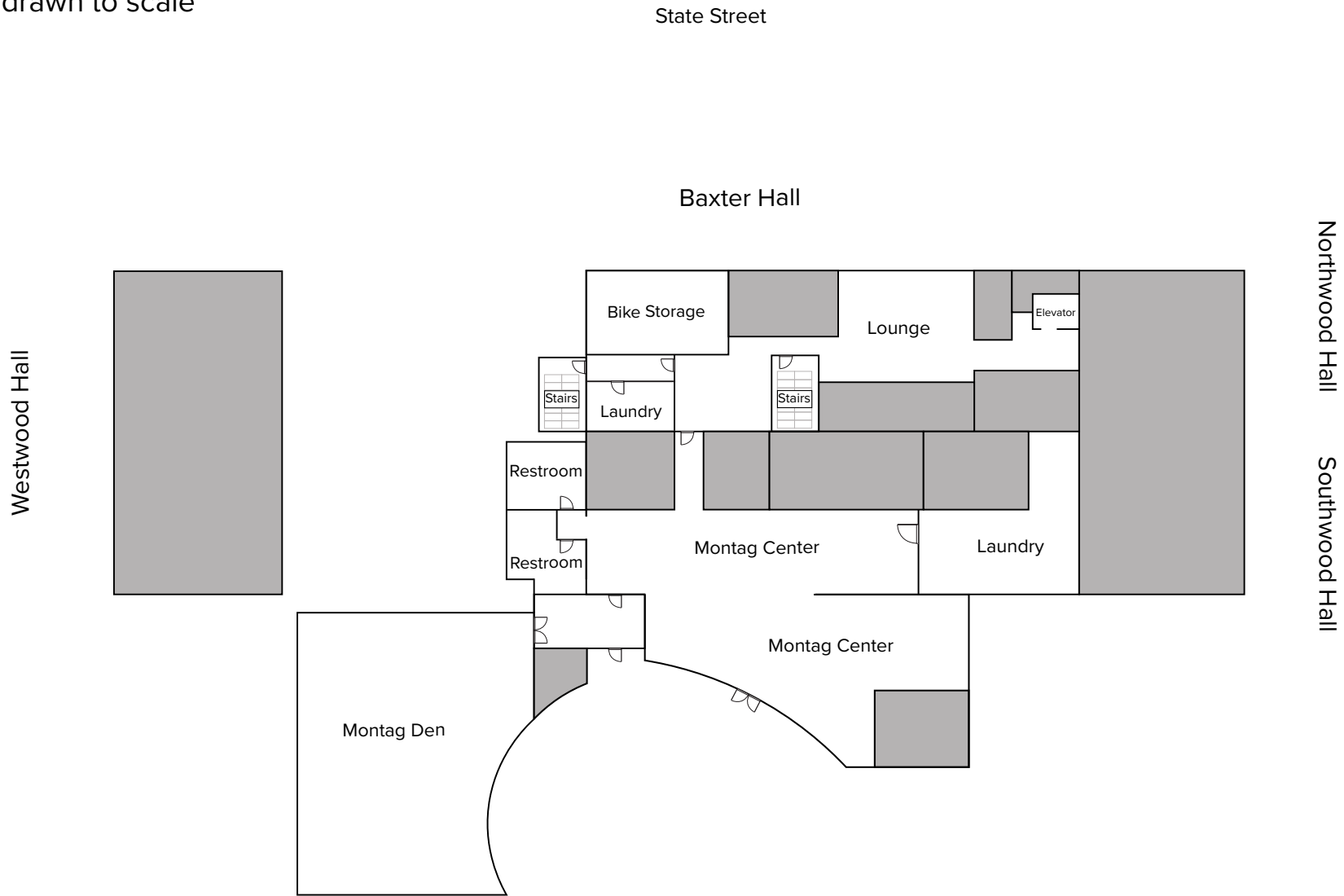
[2nd Floor](#)

Please contact the Office of Residence Life and Housing via email ([housing@willamette.edu](mailto:housing@willamette.edu)) for more assistance.

If you feel you have a need to contact Accessible Education Services to discuss the ADA accommodation process, please contact them at [accessible-info@willamette.edu](mailto:accessible-info@willamette.edu) prior to seeking an assigned housing space as the AES is an involved process that requires documentation.

# Westwood Hall - Basement

\*Not drawn to scale



Mathews Complex

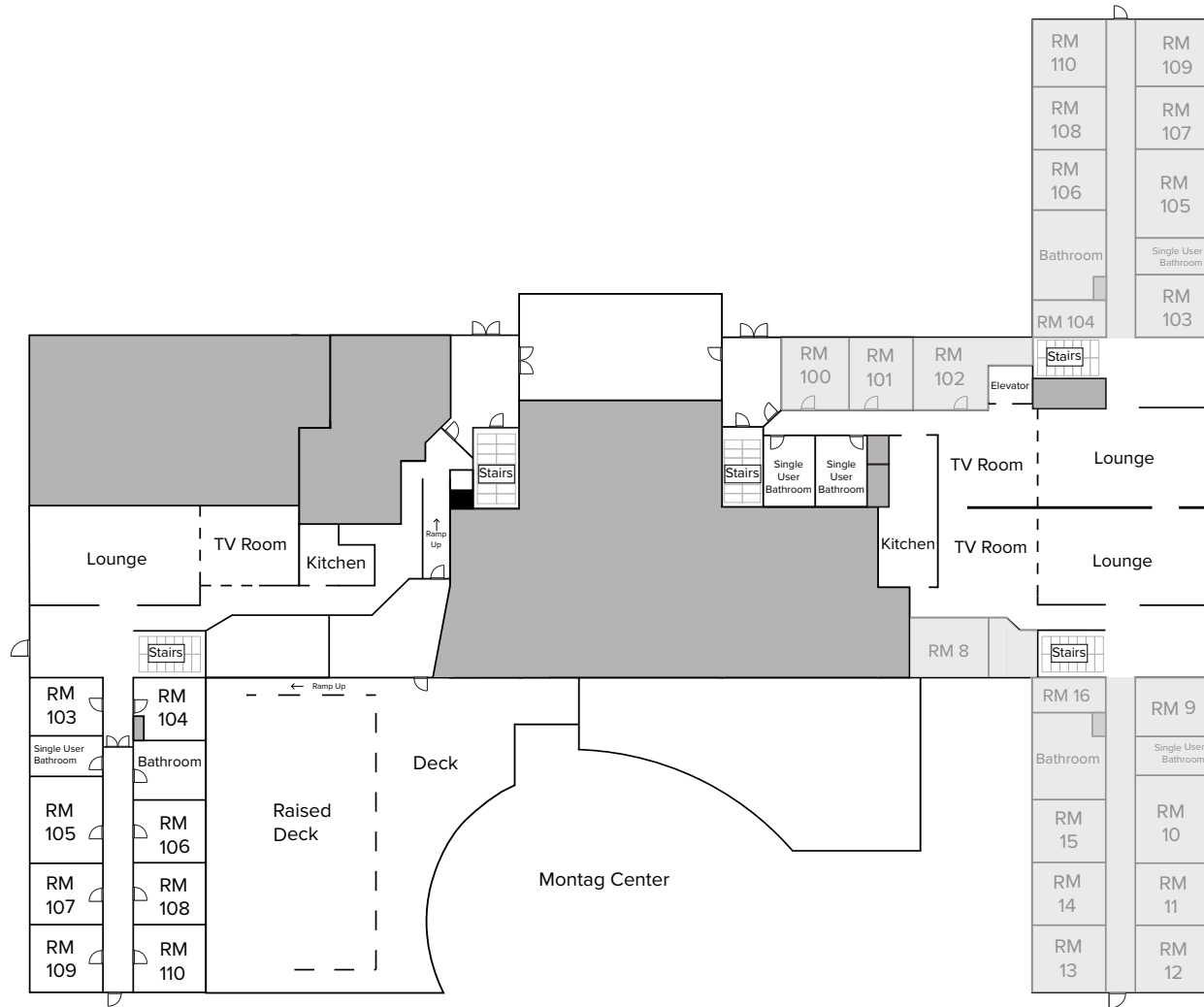
**Floorplan Legend**

- Not accessible for students

# Westwood Hall - Floor 1

\*Not drawn to scale

State Street



**Floorplan Legend**

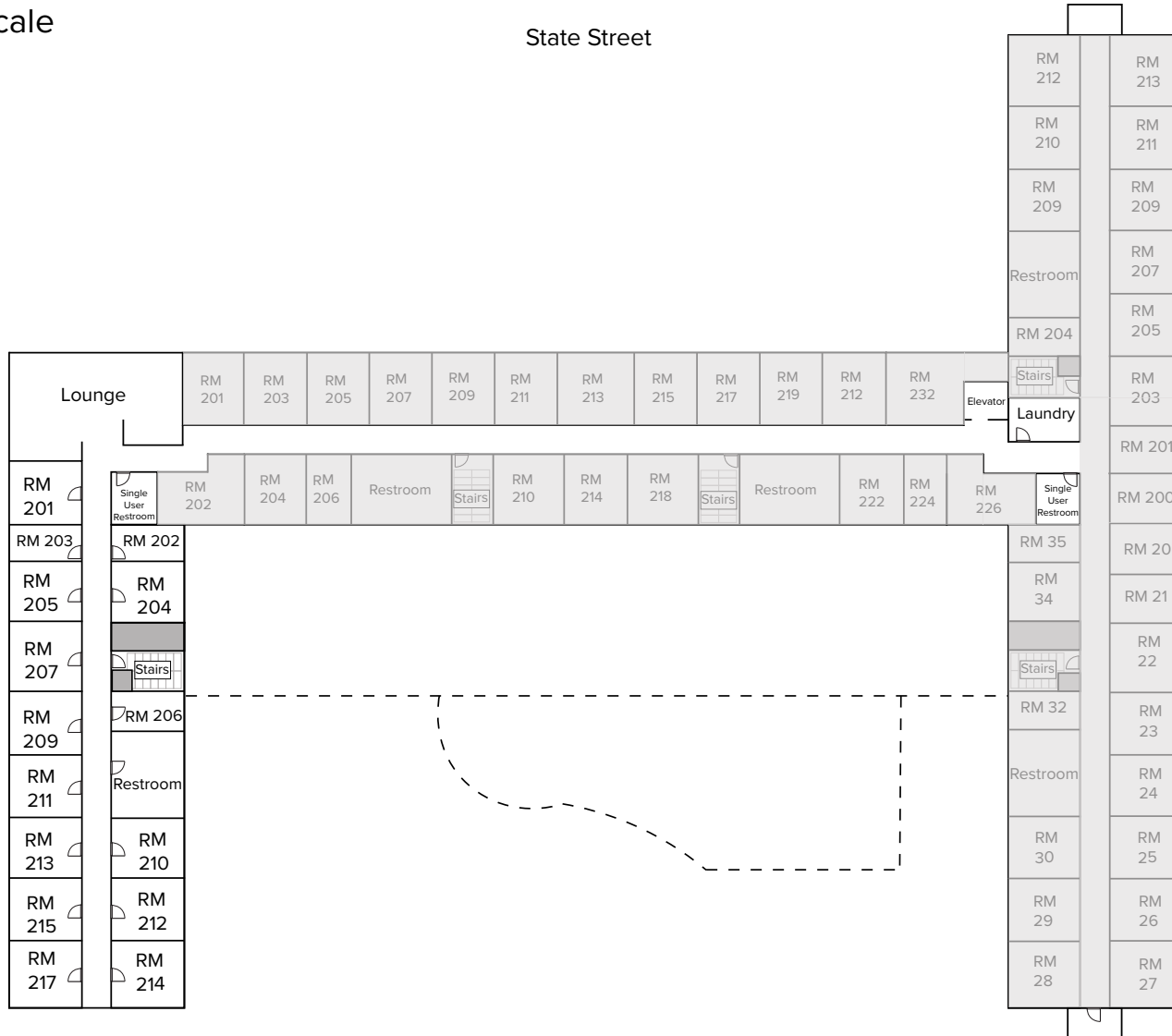
- Accessible to students in complex, but it is not Baxter
- Not accessible for students

Matthews Complex

# Westwood Hall - Floor 2

\*Not drawn to scale

State Street



Matthews Complex

**Floorplan Legend**

- Accessible to students in complex, but it is not Baxter
- Not accessible for students