

Baxter Hall

[Basement - Floor 0](#)

[1st Floor](#)

[2nd Floor](#)

[3rd Floor](#)

[4th Floor](#)

Please contact the Office of Residence Life and Housing via email (housing@willamette.edu) for more assistance.

If you feel you have a need to contact Accessible Education Services to discuss the ADA accommodation process, please contact them at accessible-info@willamette.edu prior to seeking an assigned housing space as the AES is an involved process that requires documentation.

Baxter Hall - Basement

*Not drawn to scale

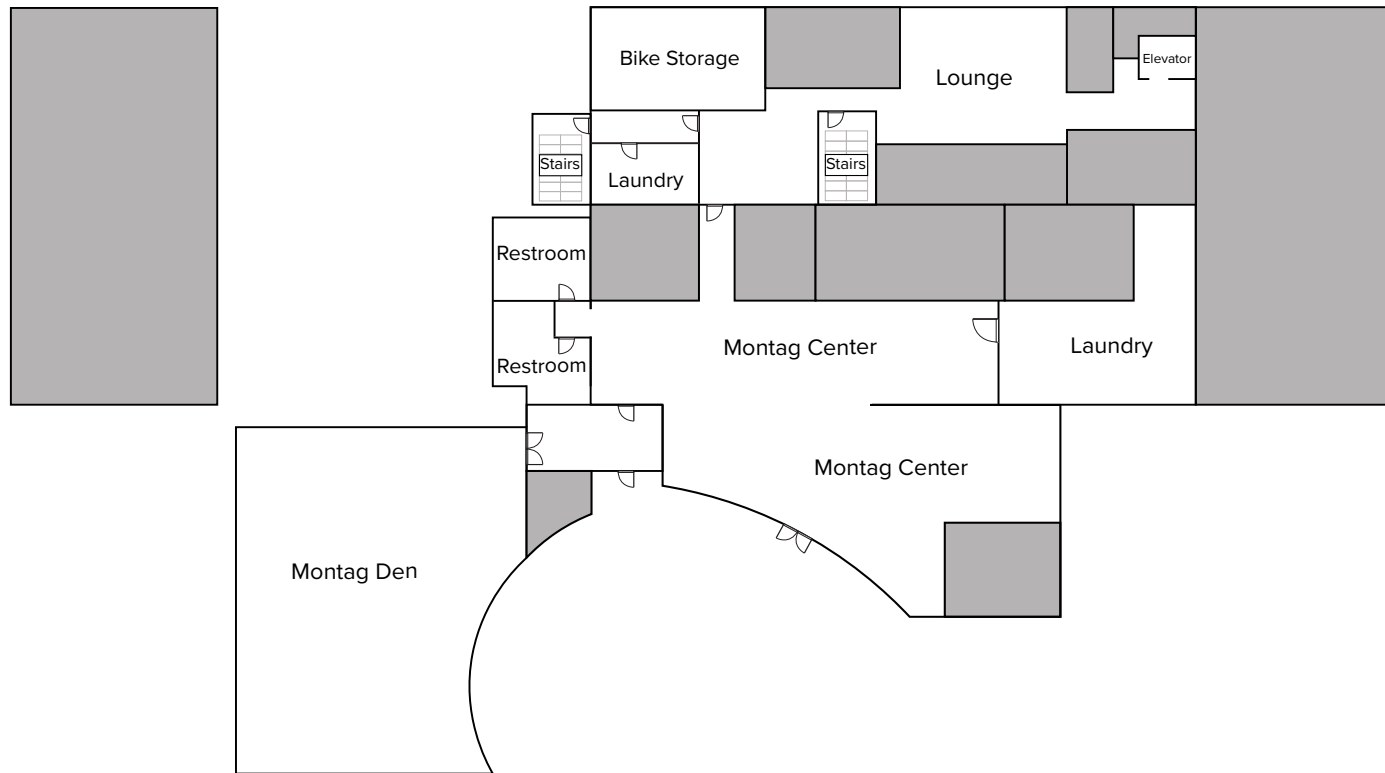
State Street

Baxter Hall

Northwood Hall

Southwood Hall

Westwood Hall



Matthews Complex

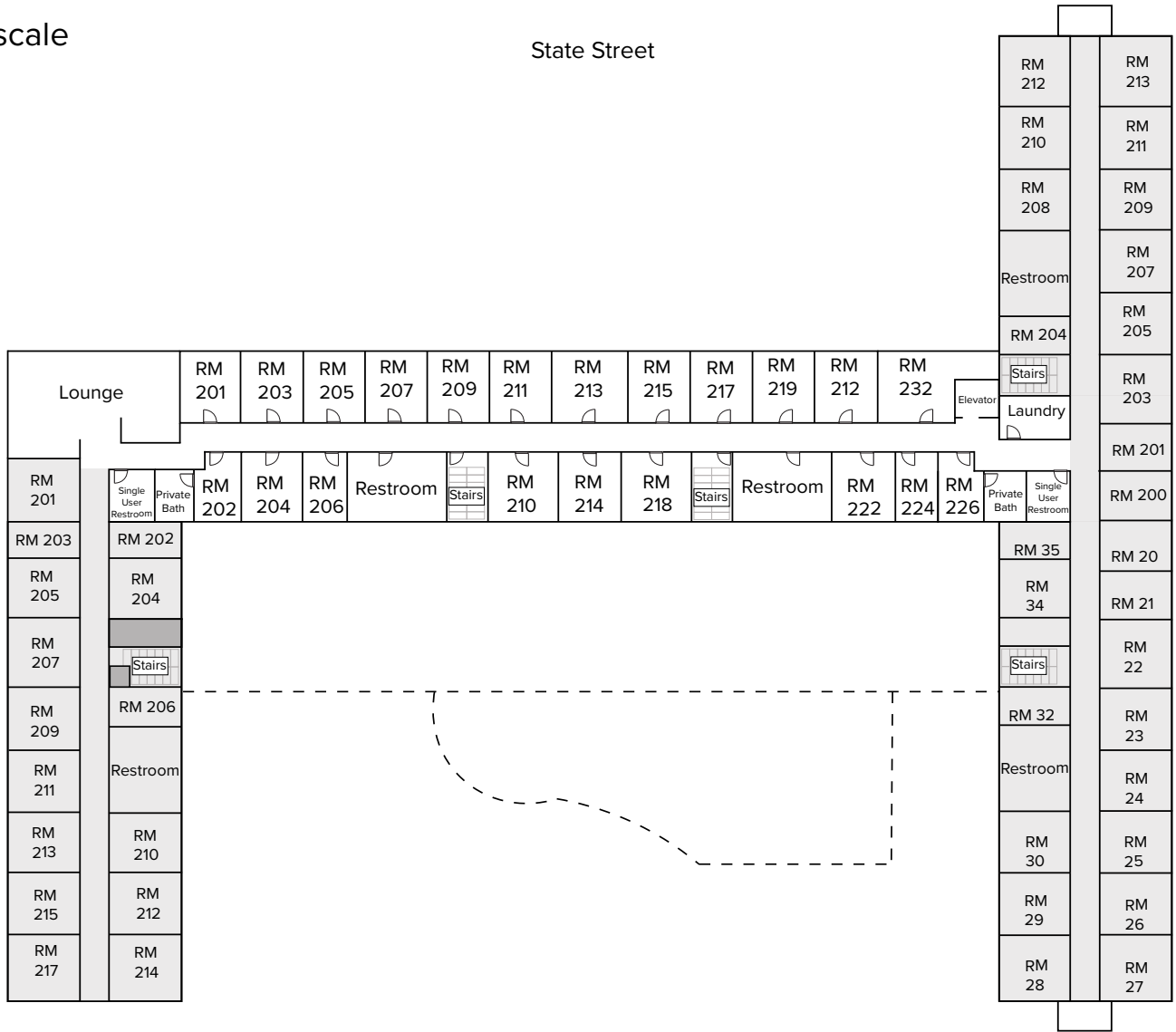
Floorplan Legend

- Not accessible for students

Baxter Hall - Floor 2

*Not drawn to scale

State Street



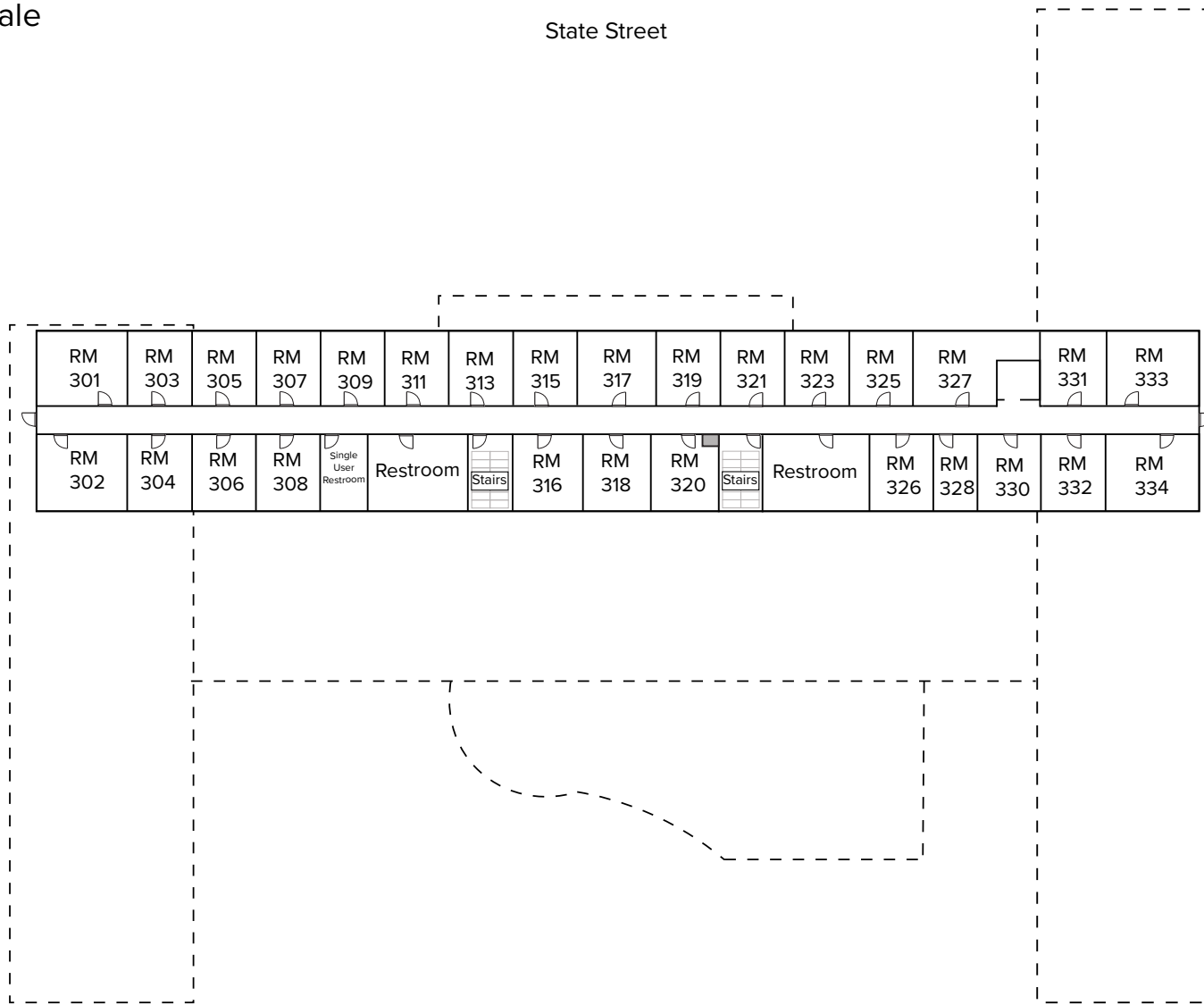
Matthews Complex

Floorplan Legend

- Accessible to students in complex, but it is not Baxter
- Not accessible for students

Baxter Hall - Floor 3

*Not drawn to scale



Matthews Complex

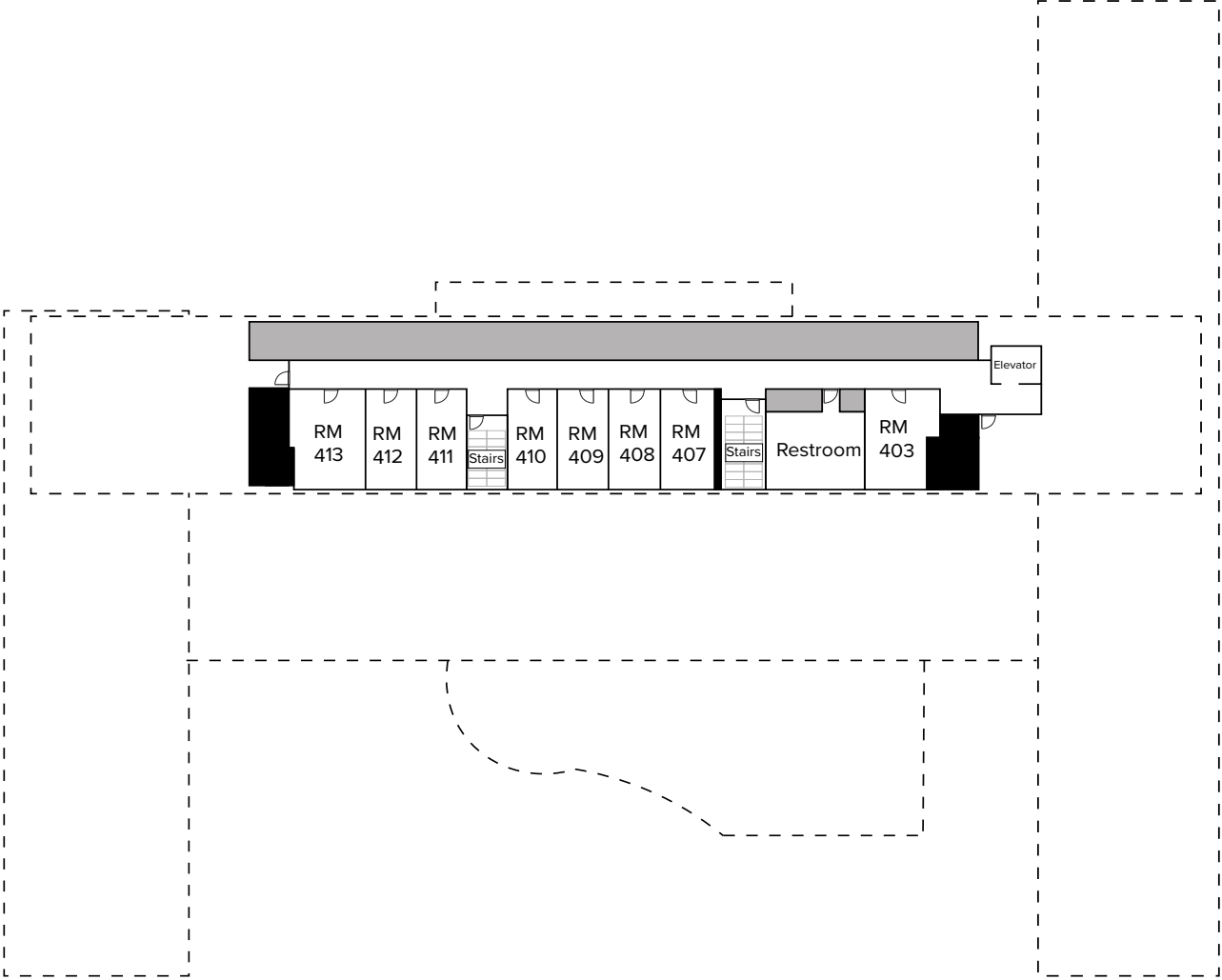
Floorplan Legend

■ Not accessible for students

Baxter Hall - Floor 4

*Not drawn to scale

State Street



Matthews Complex

Floorplan Legend

- Utility Space (Not accessible to students)
- Not accessible for students