



Belknap Hall

[Complex Outline](#)

[Basement - Floor 0](#)

[1st Floor](#)

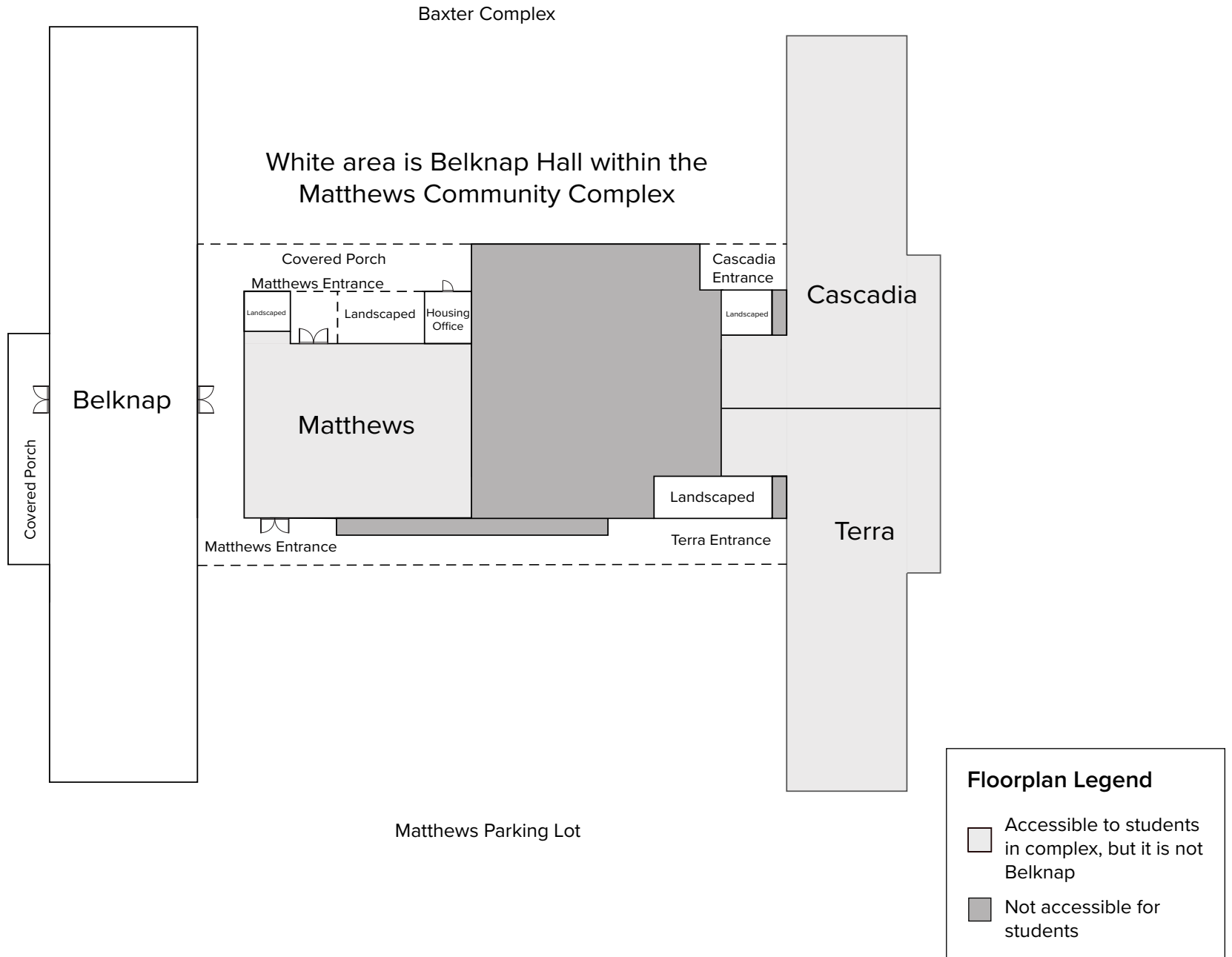
[2nd Floor](#)

Please contact the Office of Residence Life and Housing via email (housing@willamette.edu) for more assistance.

If you feel you have a need to contact Accessible Education Services to discuss the ADA accommodation process, please contact them at accessible-info@willamette.edu prior to seeking an assigned housing space as the AES is an involved process that requires documentation.

Matthews Complex - Belknap Hall Outline

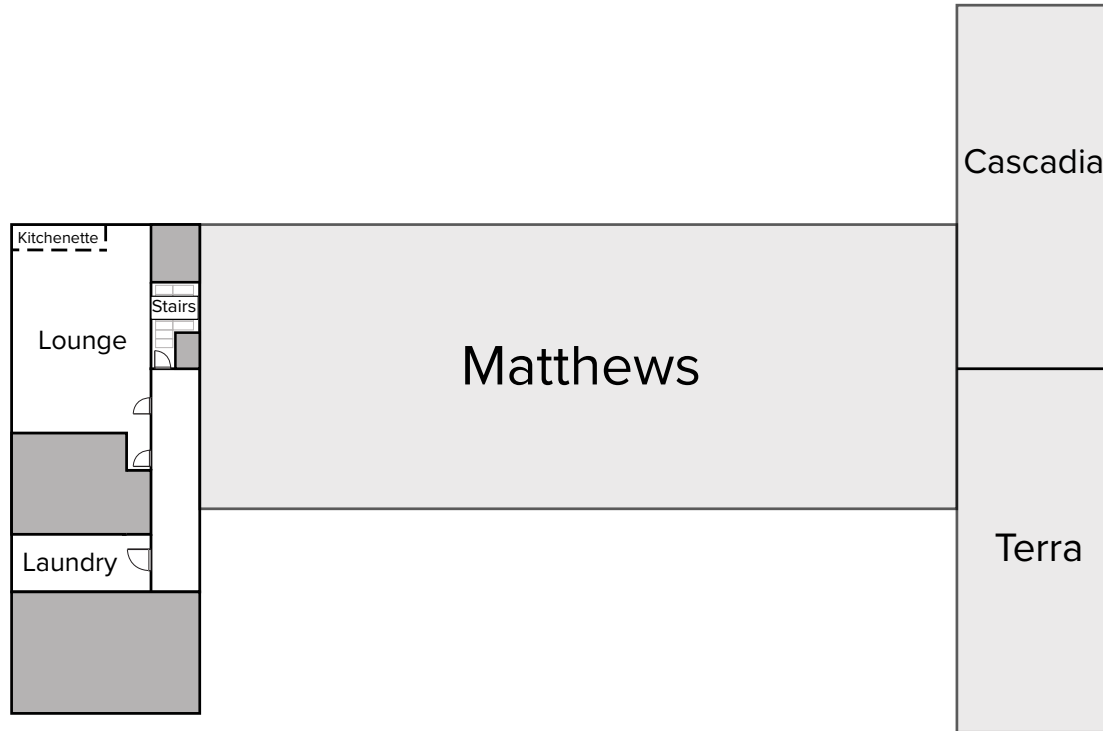
*Not drawn to scale



Belknap Hall - Basement



*Not drawn to scale

Baxter Complex



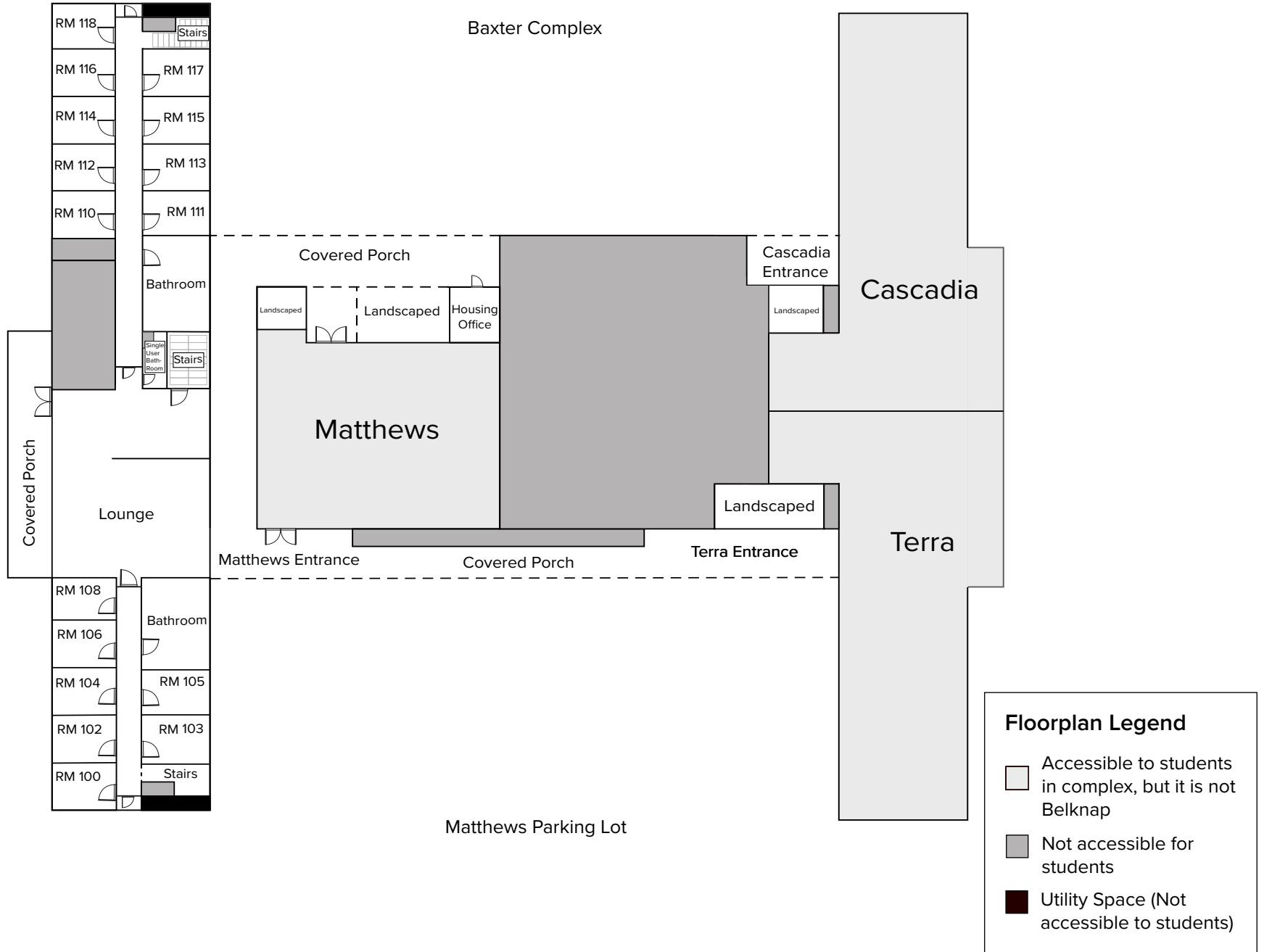
Matthews Parking Lot

Floorplan Legend

-  Accessible to students in complex, but it is not Belknap
-  Not accessible for students

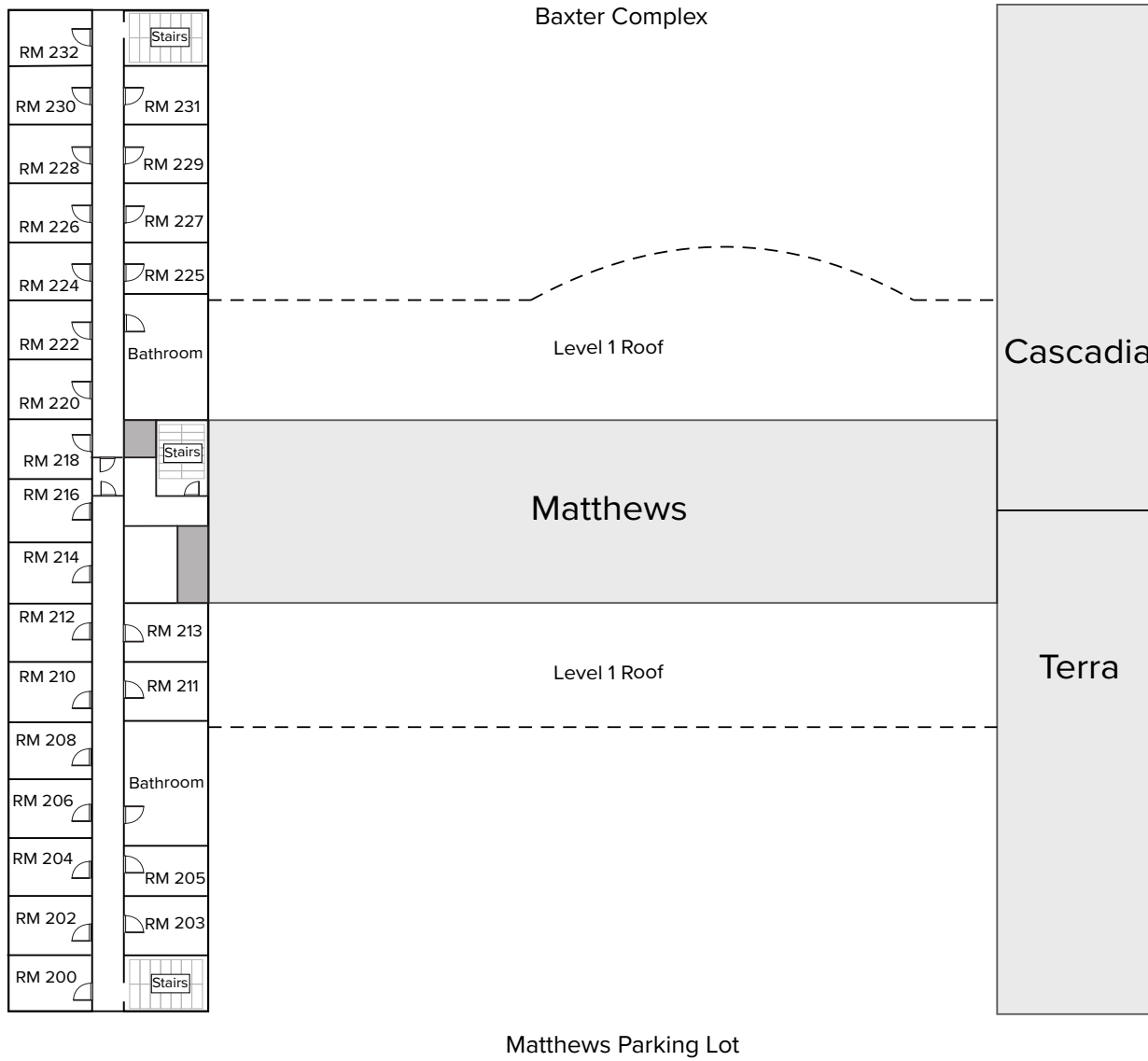
Belknap Hall - Floor 1

*Not drawn to scale



Belknap Hall - Floor 2

*Not drawn to scale



Floorplan Legend

- ☐ Accessible to students in complex, but it is not Belknap
- ▣ Not accessible for students