

# Matthews Hall

---

[Complex Outline](#)

[Basement - Floor 0](#)

[1st Floor](#)

[2nd Floor](#)

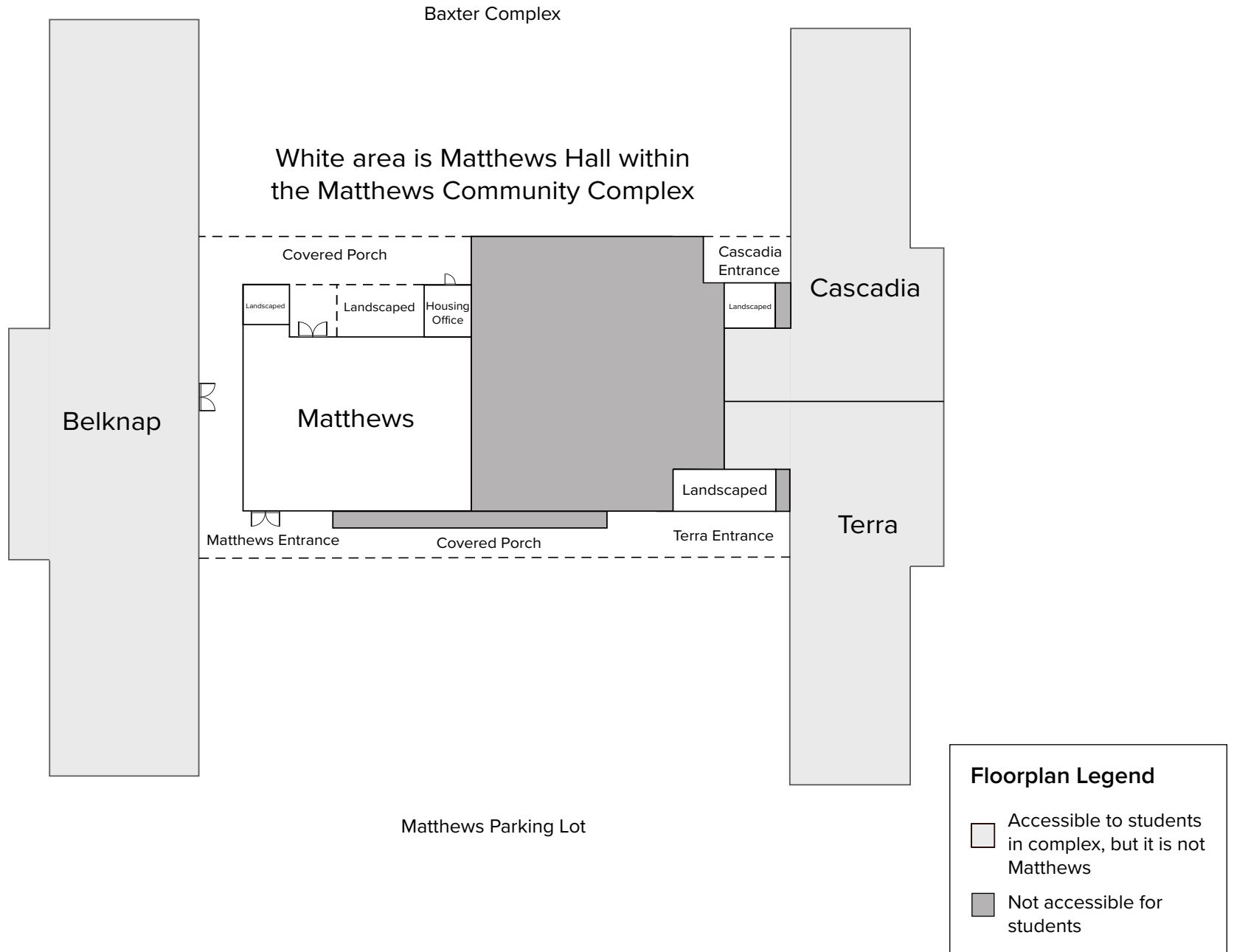
[3rd Floor](#)

Please contact the Office of Residence Life and Housing via email ([housing@willamette.edu](mailto:housing@willamette.edu)) for more assistance.

If you feel you have a need to contact Accessible Education Services to discuss the ADA accommodation process, please contact them at [accessible-info@willamette.edu](mailto:accessible-info@willamette.edu) prior to seeking an assigned housing space as the AES is an involved process that requires documentation.

# Matthews Complex - Matthews Hall Outline

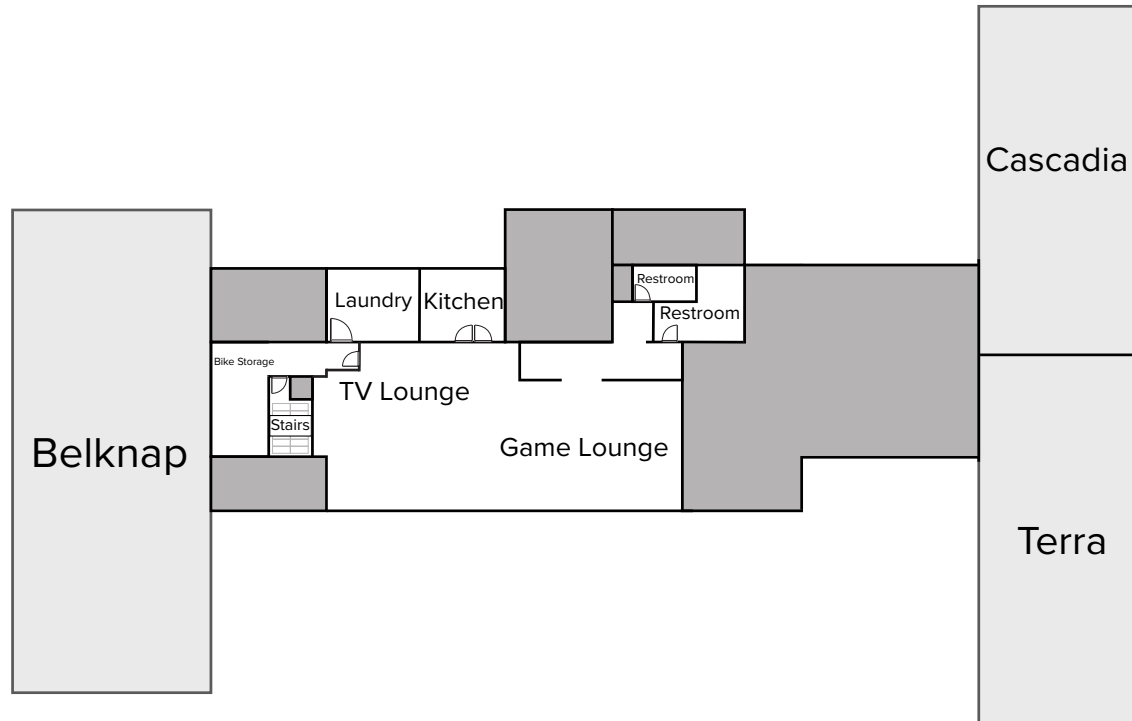
\*Not drawn to scale



# Matthews Hall - Basement



\*Not drawn to scale

Baxter Complex



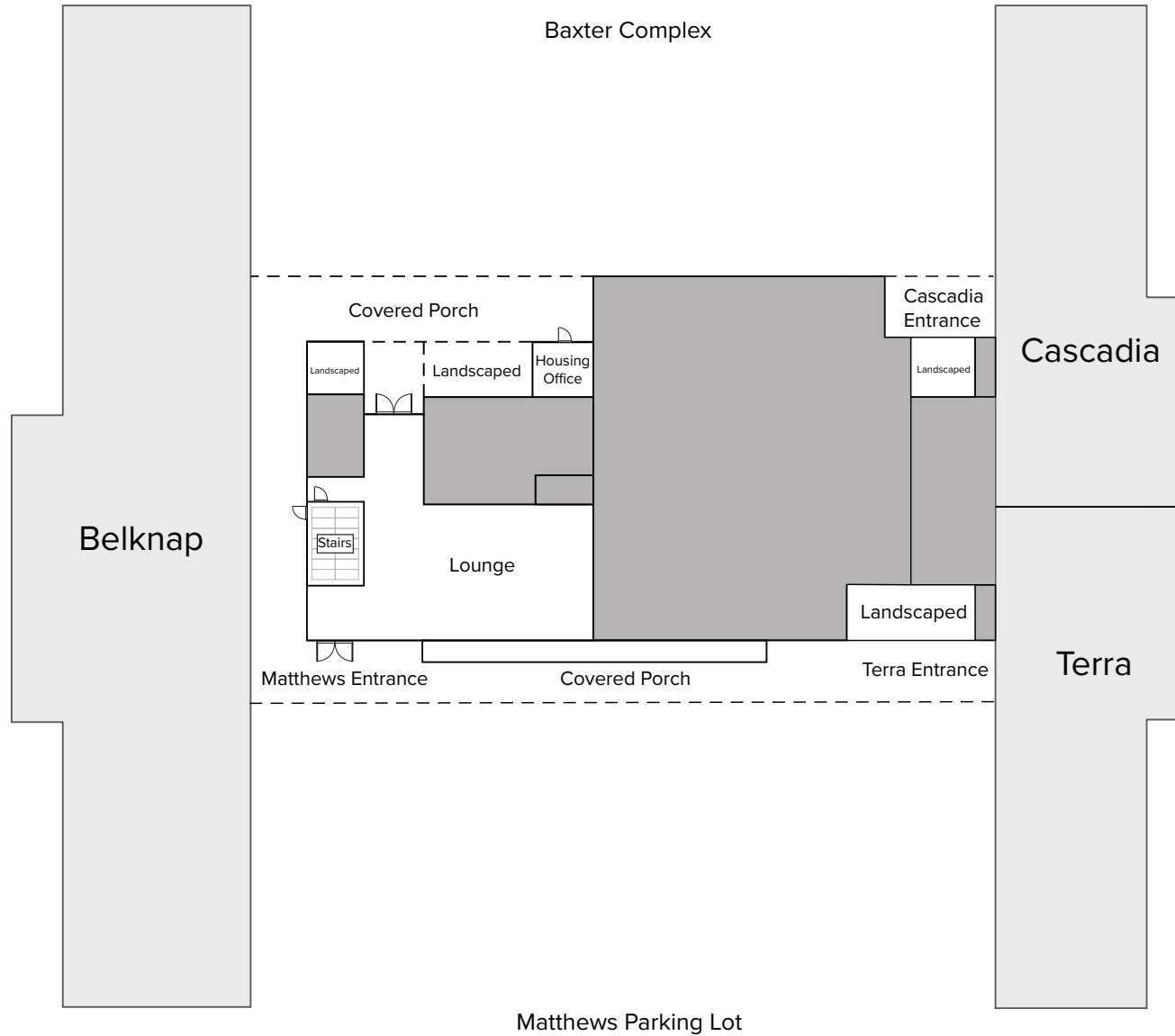
Matthews Parking Lot

**Floorplan Legend**

-  Accessible to students in complex, but it is not Matthews
-  Not accessible for students

# Matthews Hall - Floor 1

\*Not drawn to scale

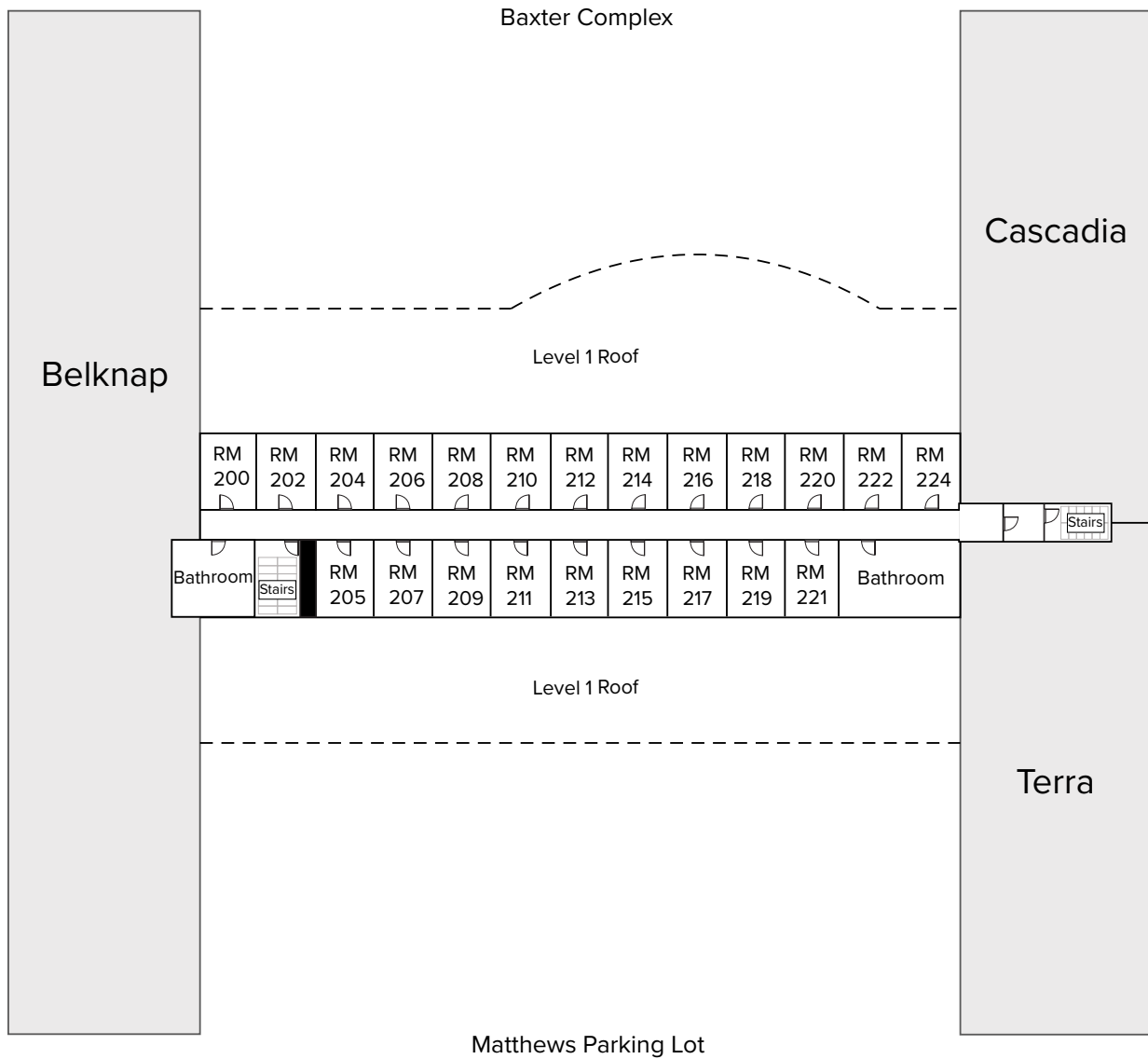


**Floorplan Legend**

- Accessible to students in complex, but it is not Matthews
- Not accessible for students

# Matthews Hall - Floor 2

\*Not drawn to scale

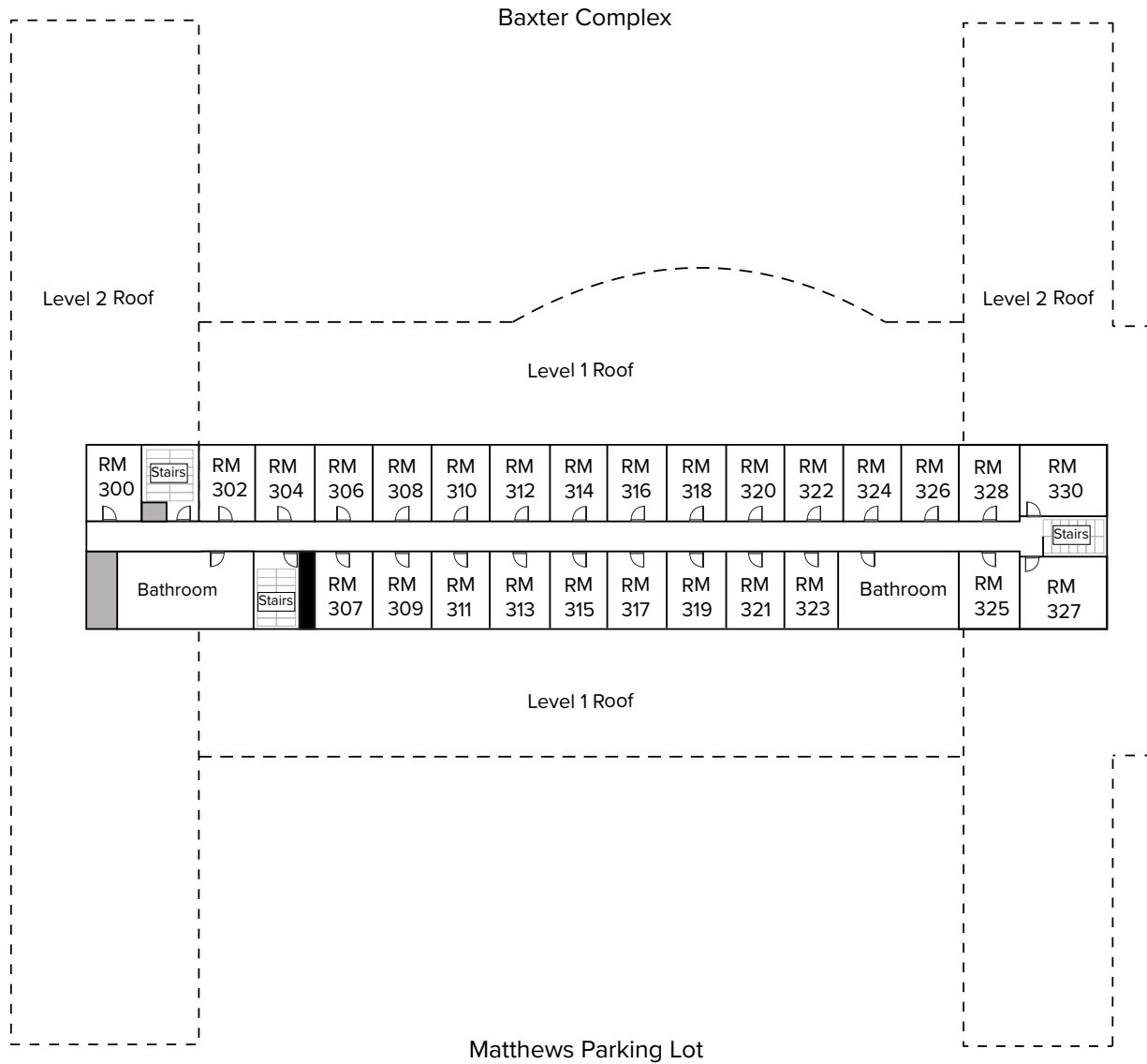


**Floorplan Legend**

- Accessible to students in complex, but it is not Matthews
- Utility Space (Not accessible to students)

# Matthews Hall - Floor 3

\*Not drawn to scale



**Floorplan Legend**

- Utility Space (Not accessible to students)
- Not accessible for students