



University Apartments

[1st Floor](#)

[2nd, 4th, and 6th Floor](#)

[3rd Floor](#)

[5th Floor](#)

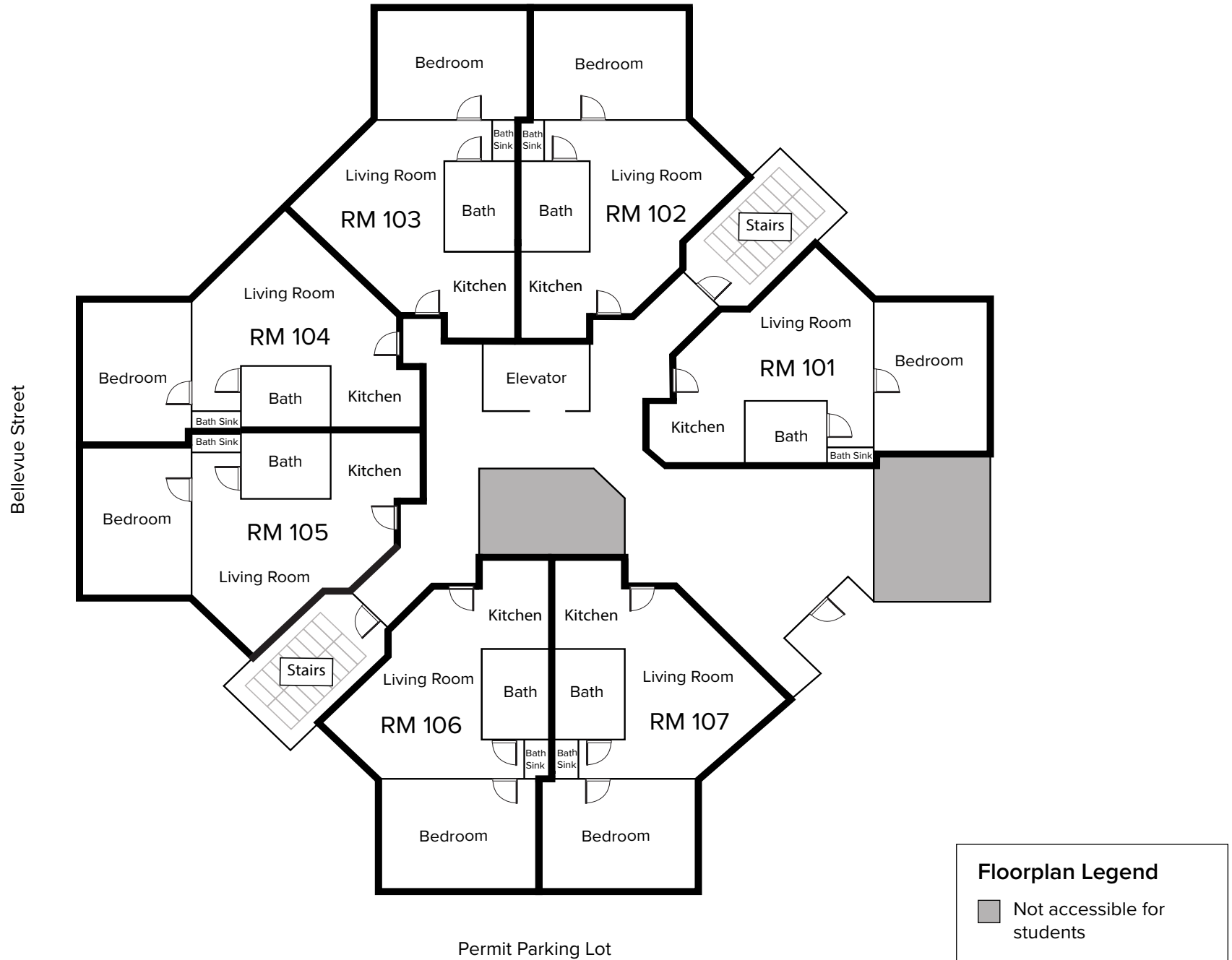
[7th Floor](#)

Please contact the Office of Residence Life and Housing via email (housing@willamette.edu) for more assistance.

If you feel you have a need to contact Accessible Education Services to discuss the ADA accommodation process, please contact them at accessible-info@willamette.edu prior to seeking an assigned housing space as the AES is an involved process that requires documentation.

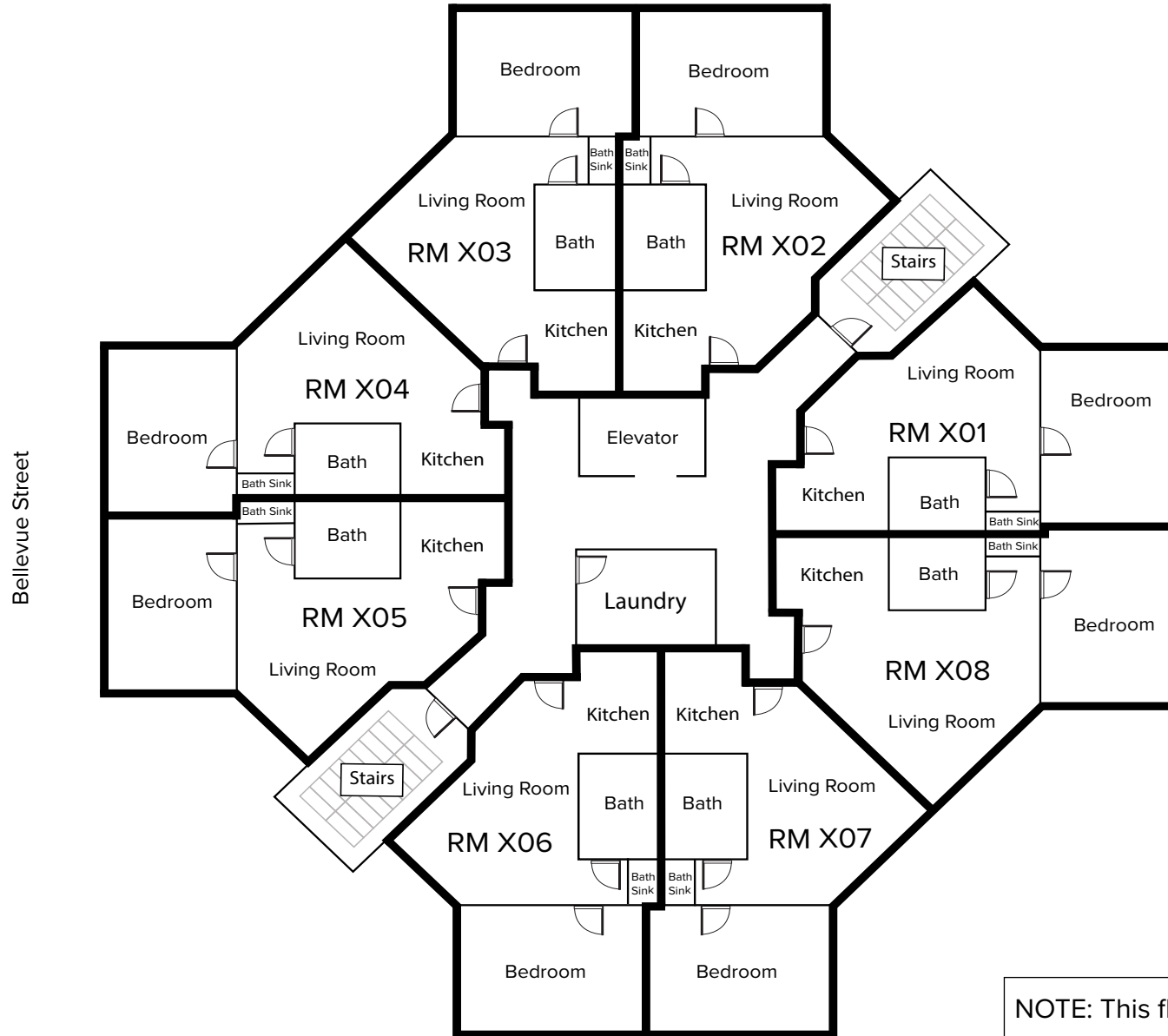
University Apartments - Floor 1

*Not drawn to scale



University Apartments - Floor 2, 4, and 6

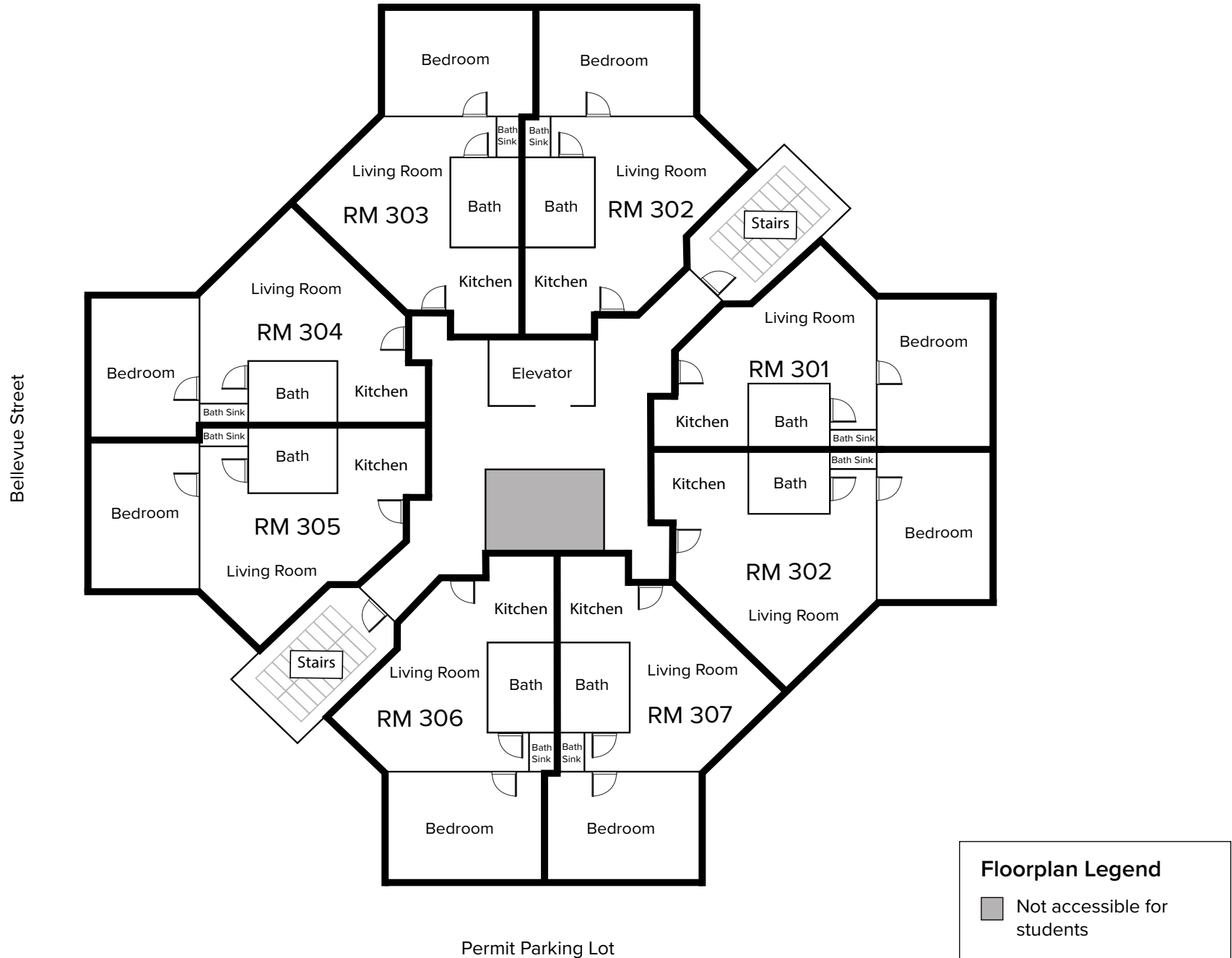
*Not drawn to scale



NOTE: This floor plan is the same for:
Floor 2
Floor 4
Floor 6

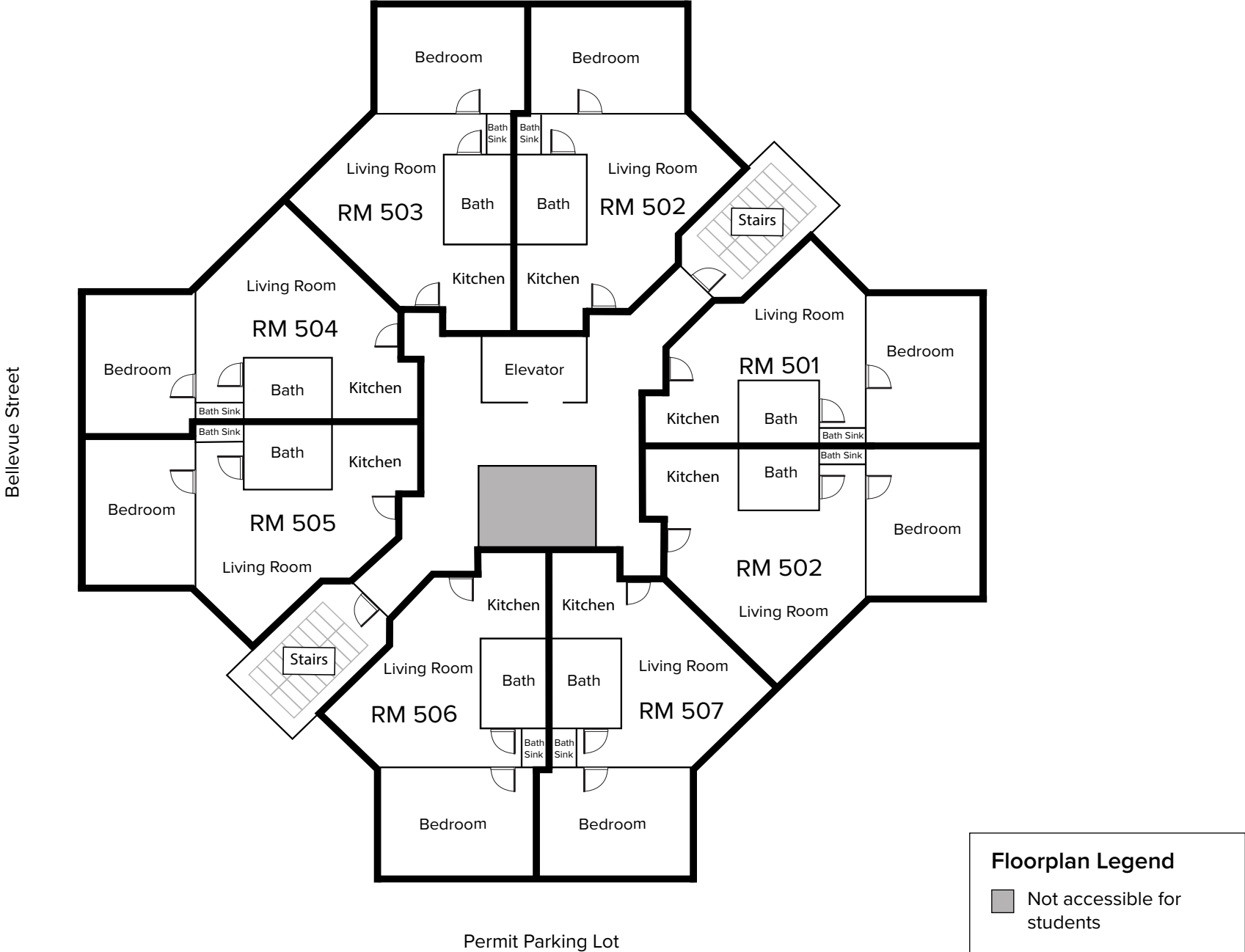
University Apartments - Floor 3

*Not drawn to scale



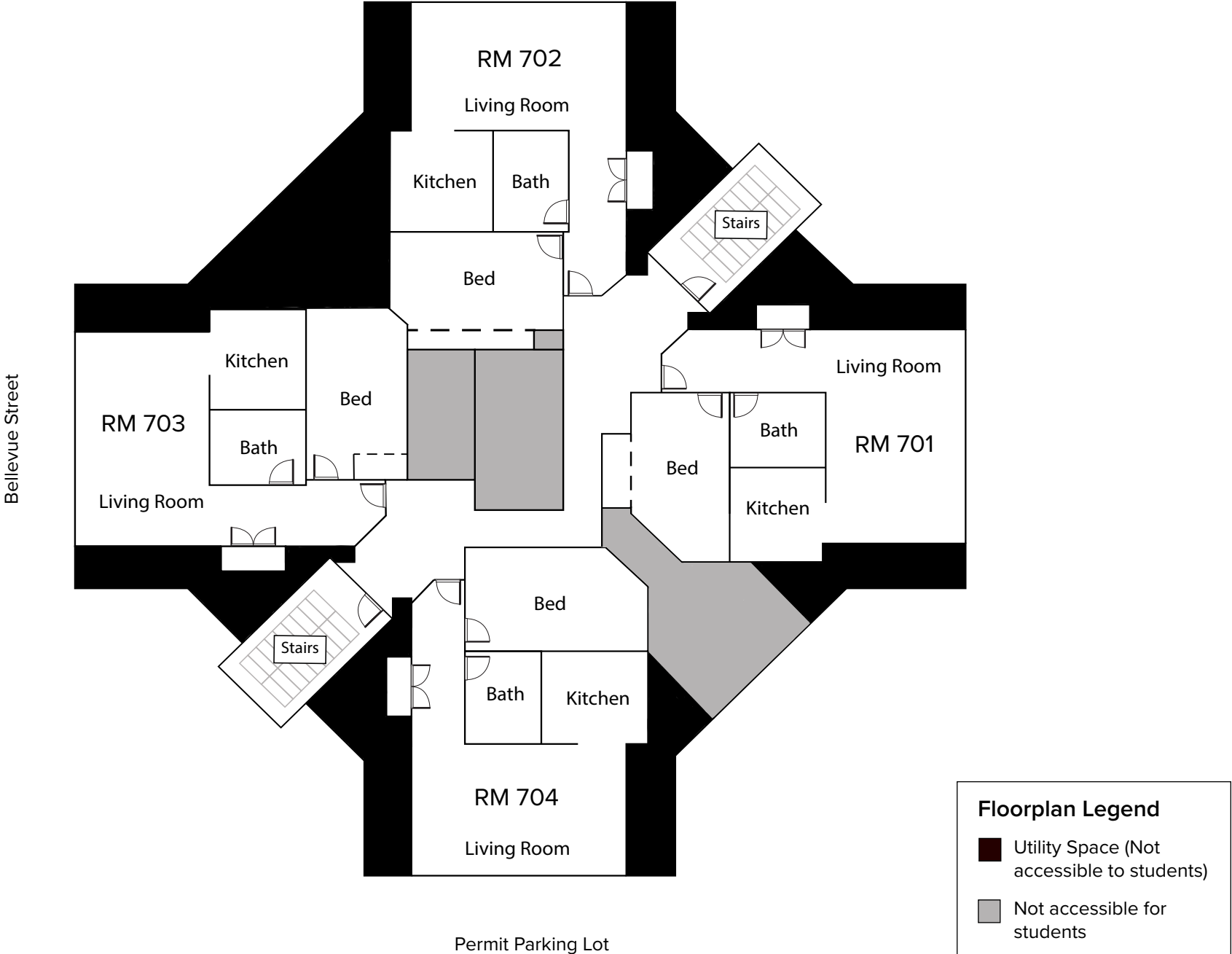
University Apartments - Floor 5

*Not drawn to scale



University Apartments - Floor 7

*Not drawn to scale



Floorplan Legend

- Utility Space (Not accessible to students)
- Not accessible for students